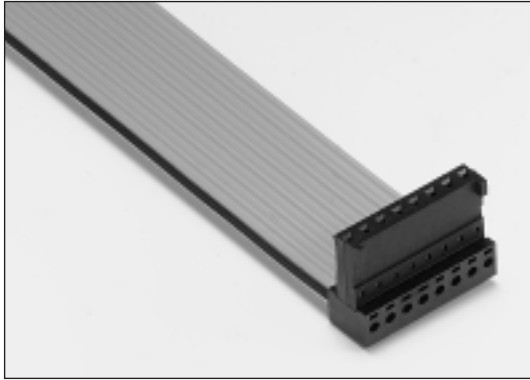




# Single Row Polarised ID.Sockets and Headers

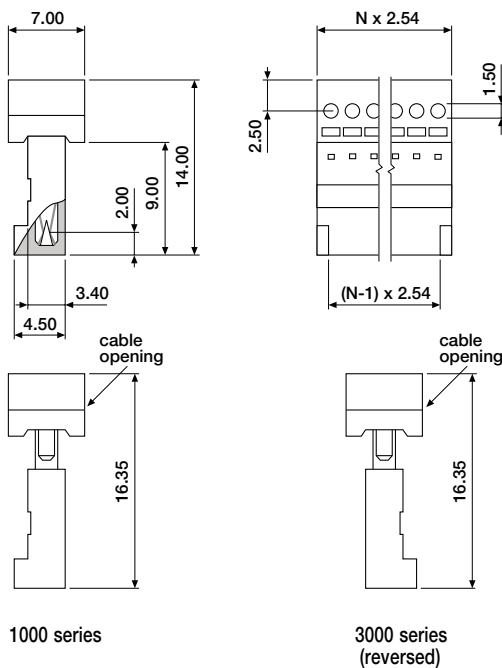
## For 2.54mm Ribbon Cable



This polarised socket connector allows a fast and reliable ID connection with 2.54mm ribbon cable AWG 26-28 or individual standard wires with an O.D. of max 1.40mm. Notching of cable is not necessary. For daisy-chain application, a new model is added.

Material : Glass-filled Polyester, UL 94V-0  
Contacts : Phosphor Bronze  
Plating : See ordering information  
Colour : Black  
Electrical : See Chapter 15

### ■ ID socket, AWG 26-28

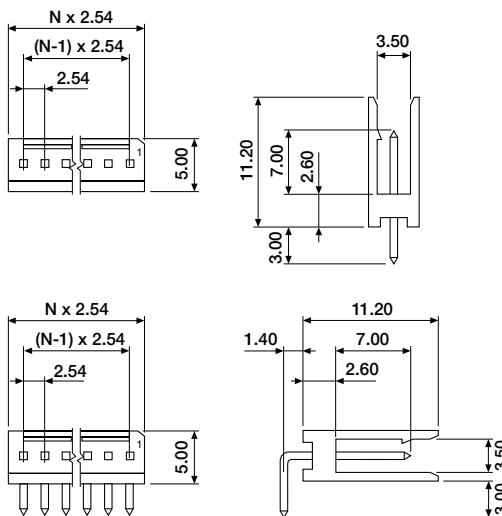


#### ORDERING INFORMATION

SSP-XXID-1000	tin plated
SSP-XXID-1070	selective gold plated
SSP-XXID-3000	tin plated (reversed)
SSP-XXID-3070	selective gold plated (reversed)
SSP-XXID-3100	tin plated (daisy-chain)
SSP-XXID-3170	selective gold plated (daisy-chain)

available circuit sizes:  
02 to 12

### ■ Header, single row, polarised



#### ORDERING INFORMATION

CHS-XXDS-0000	tin plated
CHS-XXDS-0070	selective gold plated
CHS-XXDS-1000	right angle, tin plated
CHS-XXDS-1070	right angle, selective gold Plated

available circuit sizes:  
02 to 12

PCB Hole Size =  $\varnothing$  0.80/1.00mm