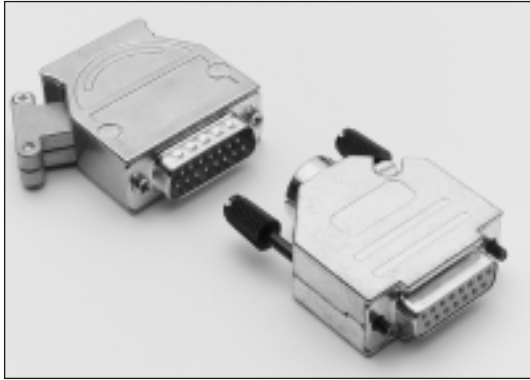




D-Connector Hoods

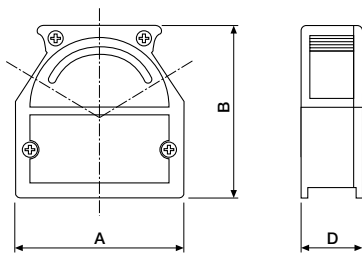
Full Metal



Full metal zinc die-cast hoods. Model 2140 can be supplied with two zinc die-cast half-shell strain relief parts or with metal crimp type ferrules. Depending on circuit size and model all hoods have a minimum of one and a maximum of three cable entry possibilities. Easy assembly by pre-tapped threads.

Series 9520 and 9620 is an easy to assemble full metal hood with metal filled plastic cable entry inserts.

■ Series 2140 (slide lock), straight and/or 60° cable outlet



09 circuits model has only two 60° cable outlets.

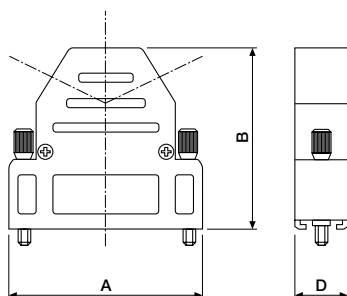
ORDERING INFORMATION

DKK-XXDC-2140 standard strain relief
available circuit sizes:
09, 15, 25, 37, 50

DIMENSIONS

Circuit Size	A	B	D	ØCable (min.-max.)
09	31.00	41.00	15.40	3.00-12.00
15	39.00	41.00	15.40	3.00-12.00
25	53.00	41.00	15.40	3.00-12.00
37	69.50	41.00	15.40	3.00-12.00
50	67.00	41.00	17.80	5.00-14.00

■ Series 3120 (screw lock), straight and/or 60° cable outlet



25 circuits model has three cable outlets.
09 and 15 circuits models have only one straight cable outlet.

ORDERING INFORMATION

DKK-XXDC-3120 standard strain relief
available circuit sizes:
09, 15, 25

DIMENSIONS

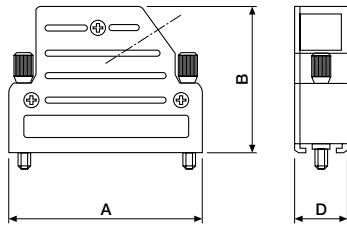
Circuit Size	A	B	D	ØCable (min.-max.)
09	31.00	38.00	15.40	3.00-12.00
15	39.50	35.00	15.40	3.00-12.00
25	53.00	43.00	15.40	3.00-12.00



D-Connector Hoods

Full Metal

■ Series 4120 (screw lock), 40° cable outlet



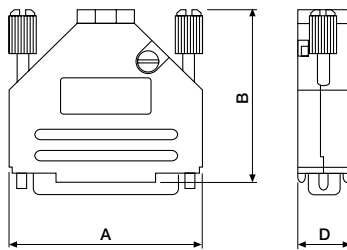
ORDERING INFORMATION

DKK-XXDC-4120 standard strain relief
 available circuit sizes:
 09, 15, 25

DIMENSIONS

Circuit Size	A	B	D	ØCable (min.-max.)
09	31.00	35.00	15.00	3.00-12.00
15	39.30	35.00	15.00	3.00-12.00
25	53.00	35.00	15.00	3.00-12.00

■ Series 9520 & 9620 (screw lock), straight cable outlet

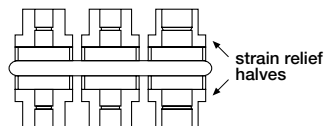


ORDERING INFORMATION

DKK-XXDC-9520 zinc plated natural
DKK-XXDC-9620 zinc plated, black
 available circuit sizes:
 09, 15, 25, 37

DIMENSIONS

Circuit Size	A	B	D	ØCable (min.-max.)
09	32.40	53.50	15.00	4.50-13.00
15	39.50	53.50	15.00	4.50-13.00
25	54.80	53.50	15.00	4.50-13.00
37	70.90	53.50	15.00	4.50-13.00



Metal filled plastic