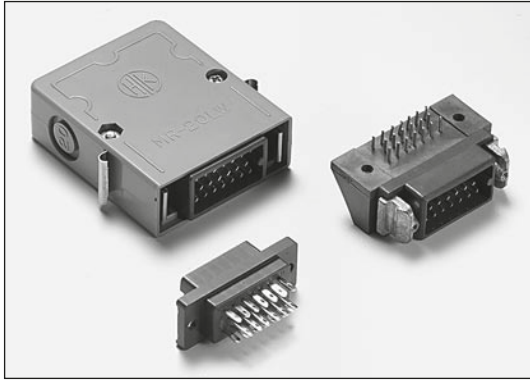




Multi-Pin Rectangular Connectors

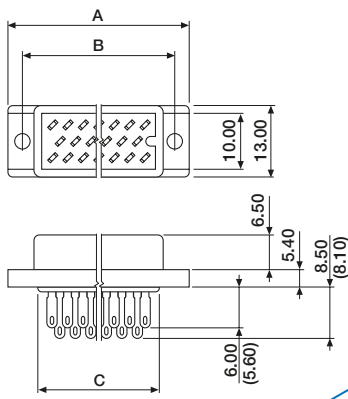
PCB to PCB, Cable to PCB and Cable to Cable



A connector family designed for data and communication equipment. The series uses a flat terminal design with outstanding contact reliability. The connector hoods can be locked by a snap and screw lock.

- Material : Diallyl Phthalate Resin (bodies)
ABS resin (hoods)
- Contacts : Phosphor Bronze (Brass for hand solder male)
- Plating : Silver or Gold over Nickel
- Electrical : See Chapter 15

Male, straight, hand solder



Dimensions between () apply for the 08 circuit model.

ORDERING INFORMATION

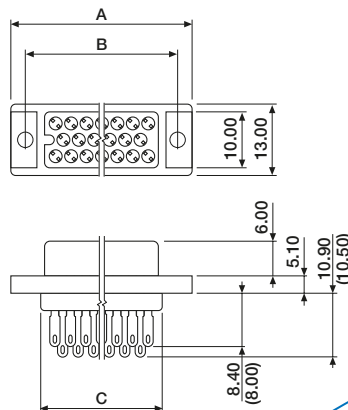
MRP-XXHS-0020 gold plated (standard)
available circuit sizes:
08, 16, 20, 25, 34, 50

DIMENSIONS

Circuit Size	A	B	C	Circuit Size	A	B	C
08	33.50	17.40	11.90	25	44.50	33.00	27.50
16	40.50	25.20	19.70	34	51.50	40.80	35.30
20	49.50	27.80	22.30	50	55.50	56.40	50.90

Contact sales office for through board models.

Female, straight, hand solder



Dimensions between () apply for the 08 circuit model.

ORDERING INFORMATION

MRS-XXHS-0020 gold plated (standard)
available circuit sizes:
08, 16, 20, 25, 34, 50

DIMENSIONS

Circuit Size	A	B	C	Circuit Size	A	B	C
08	22.40	17.40	11.90	25	38.00	33.00	27.50
16	30.20	25.20	19.70	34	45.80	40.80	35.30
20	32.80	27.80	22.30	50	61.40	56.40	50.90

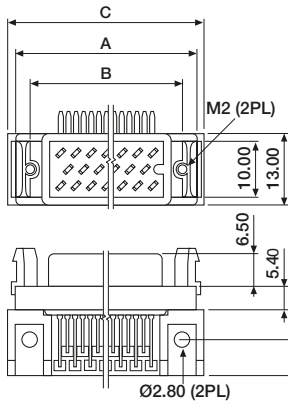
Contact sales office for through board models.



Multi-Pin Rectangular Connectors

PCB to PCB, Cable to PCB and Cable to Cable

Male, right-angle with locking blocks



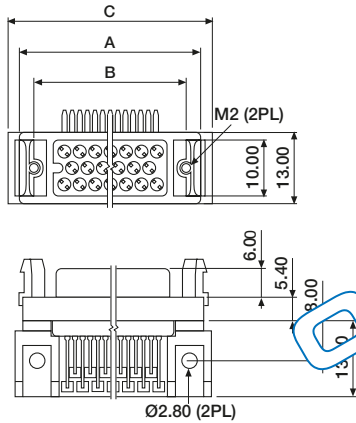
ORDERING INFORMATION

MRH-XXHS-1520 gold plated (standard)
available circuit sizes:
08, 16, 20, 25, 34, 50

DIMENSIONS

Circuit Size	A	B	C	Circuit Size	A	B	C
08	22.40	17.40	26.60	25	38.00	33.00	42.20
16	30.20	25.20	34.30	34	45.80	40.80	50.00
20	32.80	27.80	37.00	50	61.40	56.40	65.50

Female, right-angle with locking blocks



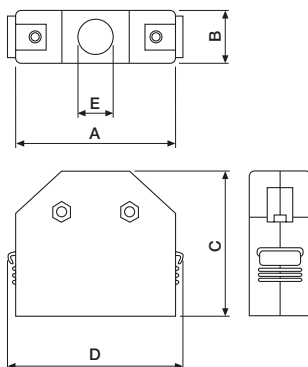
ORDERING INFORMATION

RS-XXHS-1520 gold plated (standard)
available circuit sizes:
08, 16, 20, 25, 34, 50

DIMENSIONS

Circuit Size	A	B	C	Circuit Size	A	B	C
08	22.40	17.40	26.60	25	38.00	33.00	42.20
16	30.20	25.20	34.30	34	45.80	40.80	50.00
20	32.80	27.80	37.00	50	61.40	56.40	65.50

Hood with straight cable outlet



ORDERING INFORMATION

MRH-XXHS-0000 with spring and screw lock
MRH-XXHS-3000 junction hood for cable to cable connection
available circuit sizes:
08, 16, 20, 25, 34, 50

MRB-00LB-0000

DIMENSIONS

Circuit Size	A	B	C	D	ØE
08	31.00	19.00	39.80	36.60	11.00
16	36.70	18.00	39.80	45.30	9.00
20	39.30	18.00	39.80	47.90	11.00
25	44.50	18.00	40.50	53.10	13.50
34	52.30	18.00	40.50	60.90	15.00
50	67.90	18.00	44.80	76.50	16.00

To use the locking functions the mating connector should be equipped with locking blocks (MRB-00LB-0000).

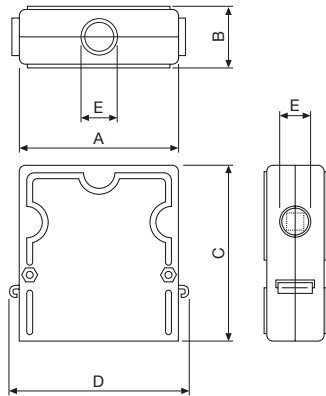
The 08 circuits model is not available as a junction model.



Multi-Pin Rectangular Connectors

PCB to PCB, Cable to PCB and Cable to Cable

■ Hood with straight and right-angle cable outlet



To use the locking functions the mating connector must be equipped with locking blocks (MRB-00LB-0000).
*08 circuits model does not have locking clips.

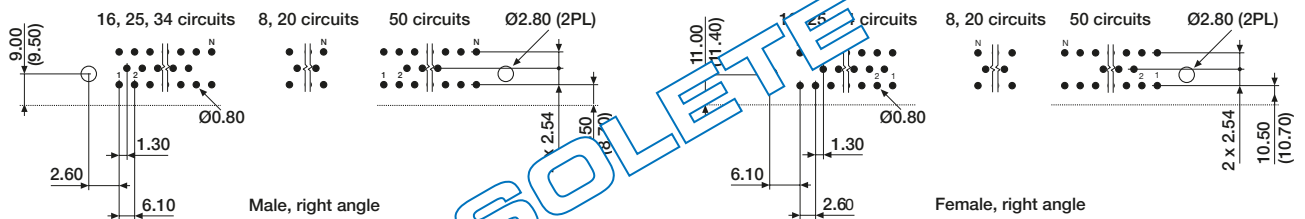
ORDERING INFORMATION

MRH-XXHS-1000 with spring lock
available circuit sizes:
08, 16, 20, 25, 34, 50
MRB-00LB-0000 locking block incl. 2 screws, M2.6 x 8

DIMENSIONS

Circuit Size	A	B	C	D	ØE
08*	25.60	17.00	38.00	31.20	6.00
16	36.70	17.00	47.00	42.50	9.00
20	39.30	18.00	47.00	44.90	11.00
25	44.50	19.00	56.00	50.10	13.50
34	52.30	19.00	58.30	57.90	15.00
50	67.90	20.00	66.10	73.50	16.00

■ PCB layouts



Dimensions between () apply for 08 circuits model.
For straight models the row spacing will be 3.00 mm instead of 2.54mm and the mounting hole is located in the centre line of the middle row of circuits.