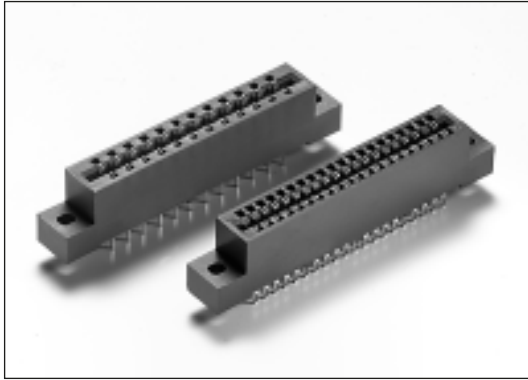




Card Edge Connectors

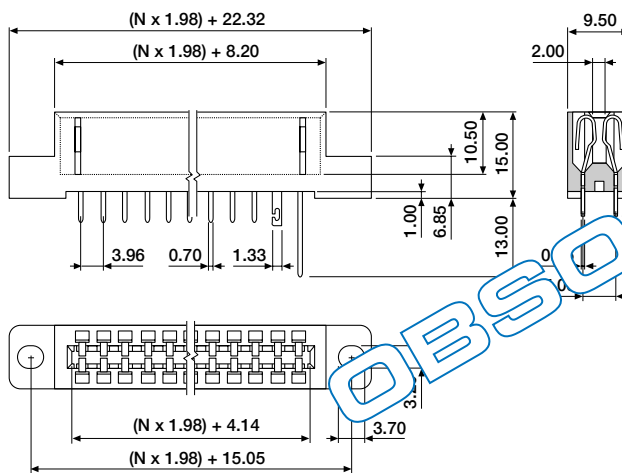
Contact spacing 3.96 and 2.54mm



These card edge connectors are available as double row, with dip solder, hand solder or wire wrap contacts. Most popular sizes are (still) available. Models 1200 and 1300 are available without mounting ears or with ears for panel mounting. (M.O.Q)

Material : Glass-filled PBT UL 94V-0
Contacts : Phosphor Bronze
Plating : Tin Plated or Selective Gold over Nickel
Electrical : See Chapter 15

■ 3.96mm spacing with mounting ears



ORDERING INFORMATION

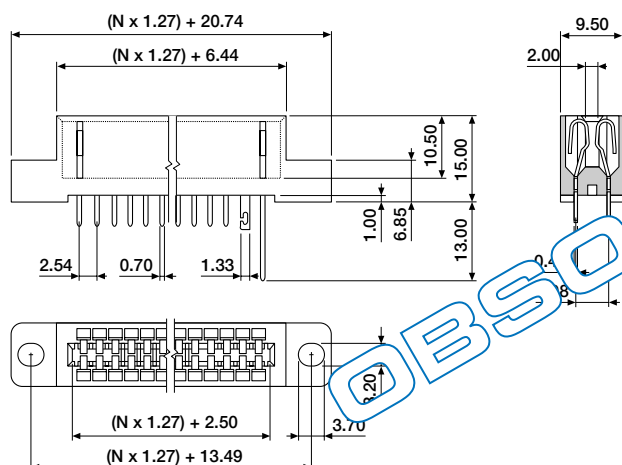
CED-XXSS-1370 dip solder, selective gold plated
CED-XXHS-1370 hand solder, selective gold plated
CED-XXWW-1370 wire wrap, selective gold plated

available circuit sizes:
12, 20, 24, 30, 36, 44, 60, 62, 72, 86,
A0 (100), B0 (110)

CED-00HS-7000 polarising key (between contacts)

Contact sales office for models without mounting ears.

■ 2.54mm spacing with mounting ears



ORDERING INFORMATION

CED-XXSS-1270 dip solder, selective gold plated
CED-XXHS-1270 hand solder, selective gold plated
CED-XXWW-1270 wire wrap, selective gold plated

available circuit sizes:
14, 20, 22, 26, 30, 36, 38, 40, 44, 46,
50, 60, 62, 70, 74, 86, 98,
A0 (100), B0 (110)

CED-00HS-7000 polarising key (between contacts)

Contact sales office for models without mounting ears.