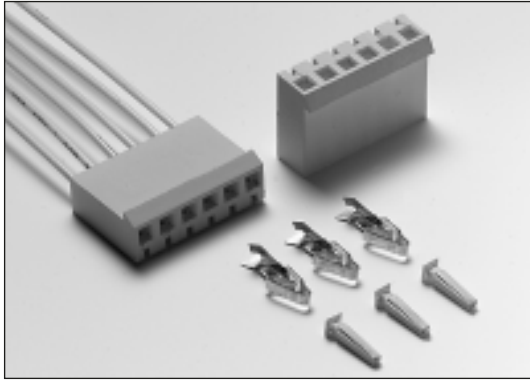




# 3.96mm Single Row Crimp Type Housings

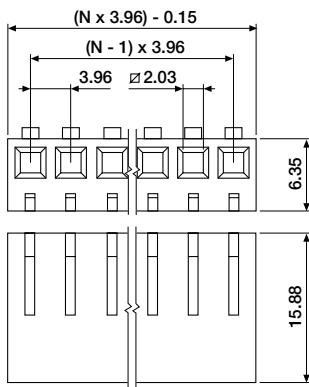
## Crimp Type Terminals and Polarising Peg



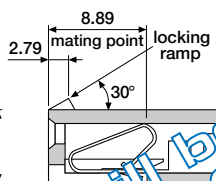
Reliable economical discrete wire crimp style housings for wire to board applications. Available with or without snap lock for increased design options. Requires crimp contact to make complete assembly. Mates with TLH series headers or pins staked directly into PCB's.

Material : Nylon, UL 94V-0  
Contacts : Copper Alloy  
Plating : Tin or Gold Plated over Copper  
Electrical : See Chapter 15

### ■ Crimp type housing



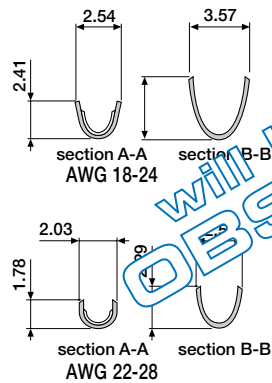
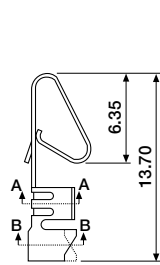
will become  
OBSOLETE



#### ORDERING INFORMATION

TLT-XXKK-0000 without locking ramp  
TLT-XXKK-1000 with locking ramp (standard)  
available circuit sizes:  
2 to 12

### ■ Crimp type terminals, loose

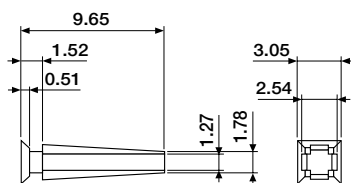


will become  
OBSOLETE

#### ORDERING INFORMATION

TLT-00KT-0000 tin plated, AWG 22-28  
TLT-00KT-0020 gold plated, AWG 22-28  
TLT-00KT-1000 tin plated, AWG 18-24  
TLT-00KT-1020 gold plated, AWG 18-24  
HGS-00KT-1200 hand crimp tool, AWG 18-28  
HGS-00KT-2100 hand crimp tool (O.M.P), AWG 18-28

### ■ Polarising peg



will become  
OBSOLETE

#### ORDERING INFORMATION

TLT-00KK-8000 polarising peg