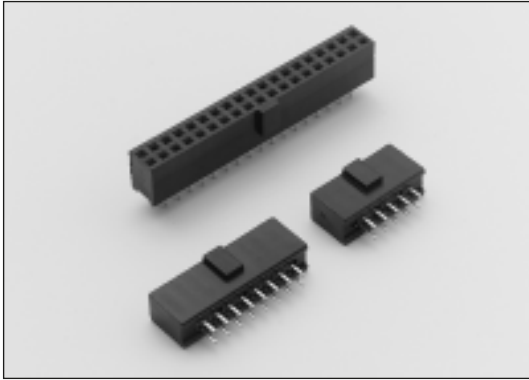




2.54mm Double Row PCB Socket Connectors

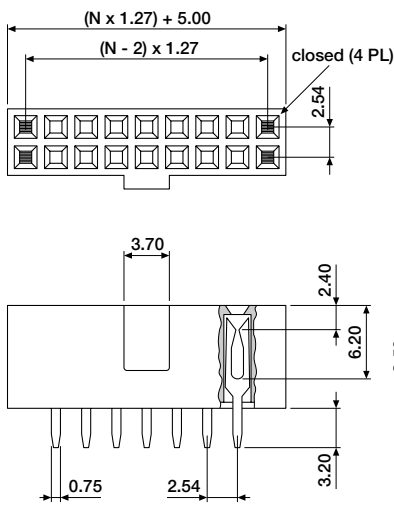
Polarised



PCB double row socket connectors for top entry application. Because the first and last two positions of the connector are not loaded, these connectors are the ideal mating combination with boxed header series BOH-XXDS-0070/1070.

Material : Glass-filled Polyester, UL 94V-0
Contacts : Phosphor Bronze
Plating : Gold Flash over Nickel
Electrical : See Chapter 15

■ Top entry, double row, through board



PCB Hole Size = $\varnothing 1.00$

ORDERING INFORMATION

SPD-XXDS-0020 straight, gold flash plated
available circuit sizes:
10, 14, 16, 20, 26, 34, 40, 50, 60, 64