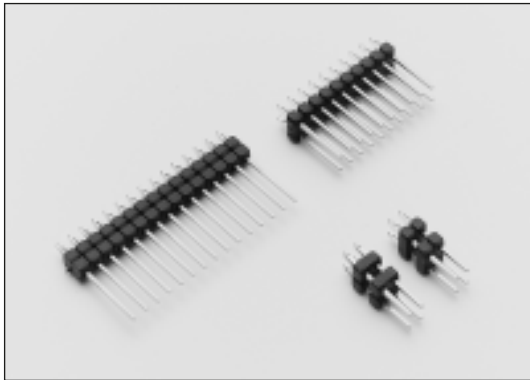




# 2.54mm Breakable Header Strips

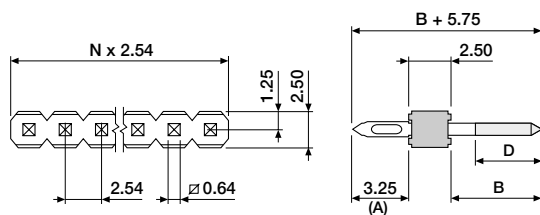
## Press Fit



A range of single and double row headers for press fit application.

- Material : Glass-filled Polyester, UL 94V-0
- Contacts : Brass
- Plating : Tin or Selective Gold over Nickel
- Tolerances :  $\pm 0.25\text{mm}$  (A, B and C dimensions)  
 $\pm 0.10\text{mm}$  (other dimensions)
- Electrical : See Chapter 15

### ■ Single row, straight



Selective gold plated section (D) 4.50mm min.

#### ORDERING INFORMATION & DIMENSIONS

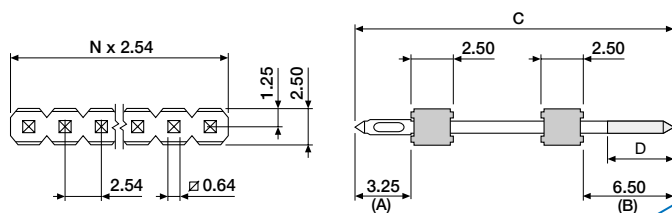
- 46402XX-XX-01 tin plated
- 46402XX-XX-07 selective gold plated

available circuit sizes:  
02 to 40

for pin No. see chart below

Pin No.	B	Pin No.	B	Pin No.	B	Pin No.	B
01	5.55	05	11.95	09	19.15	13	24.25
02	6.85	06	14.05	10	20.95		
03	8.95	07	15.85	11	22.15		
04	10.75	08	17.05	12	23.25		

### ■ Single row, straight, dual body



Selective gold plated section (D) 4.50mm min.

#### ORDERING INFORMATION & DIMENSIONS

- 48402XX-XX-01 tin plated
- 48402XX-XX-07 selective gold plated

available circuit sizes:  
02 to 40

for pin No. see chart below

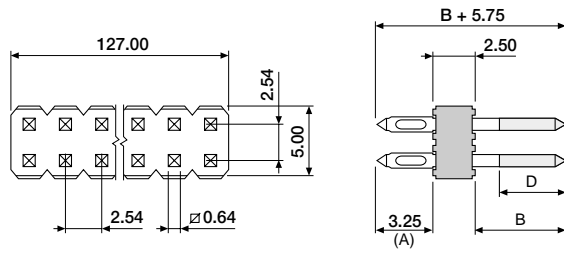
Pin No.	C	Pin No.	C	Pin No.	C	Pin No.	C
04	16.50	07	21.60	10	26.70	13	30.00
05	17.70	08	22.80	11	27.90		
06	19.80	09	24.90	12	29.00		



# 2.54mm Breakable Header Strips

## Press Fit

### Double row, straight



Selective gold plated section (D) 4.50mm min.  
Contact sales office for availability of triple row models

#### ORDERING INFORMATION & DIMENSIONS

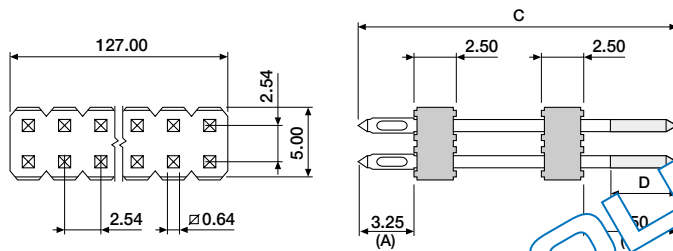
46404XX-XX-01 tin plated  
46404XX-XX-07 selective gold plated

available circuit sizes:  
04 to 80

for pin No. see chart below

Pin No.	B	Pin No.	B	Pin No.	B	Pin No.	B
01	5.55	05	11.95	09	19.15	13	24.25
02	6.85	06	14.05	10	20.95		
03	8.95	07	15.85	11	22.15		
04	10.75	08	17.05	12	23.25		

### Double row, straight, dual body



Selective gold plated section (D) 4.50mm min.  
Contact sales office for availability of triple row models

#### ORDERING INFORMATION & DIMENSIONS

48404XX-XX-01 tin plated  
48404XX-XX-07 selective gold plated

available circuit sizes:  
04 to 80

for pin No. see chart below

Pin No.	C	Pin No.	C	Pin No.	C	Pin No.	C
04	16.50	07	21.60	10	26.70	13	30.00
05	17.70	08	22.80	11	27.90		
06	19.80	09	24.90	12	29.00		

### PCB hole specification

