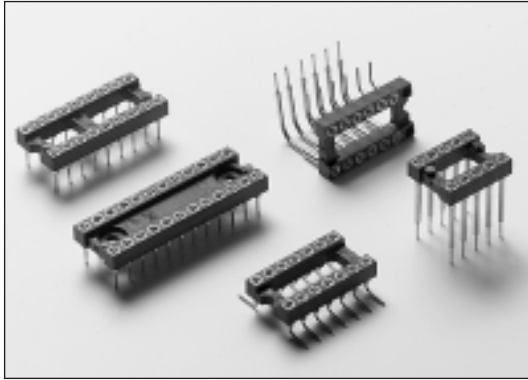




IC Sockets Dual In Line (DIL)

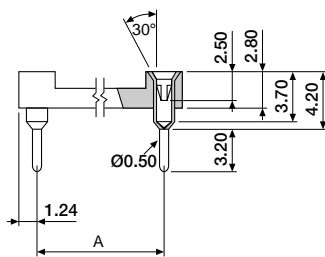
Machine Tooled Contacts



This complete range of professional DIL sockets have machine tooled contacts. The contacts are of a two part construction, an outer shell fitted with an inner four fingered spring contact. For all sockets the combination of a tin plated shell/pin and a gold plated clip is standard. Tin plated and thicker plated clips are available against M.O.Q. Please contact sales office for more information.

- Material : Glass-filled Polyester, UL 94V-0
- Contacts : Copper Alloy (outer shell)
Beryllium Copper (spring contact)
- Plating : Tin or Gold over Nickel
- Electrical : See Chapter 15

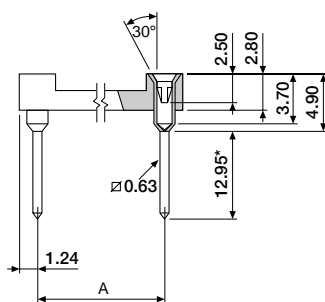
■ IC socket, open frame



ORDERING INFORMATION

- ICD-XXDS-X070 tin shell, gold plated clip (standard)
- ICD-XXDS-X020 gold plated shell and clip
- 3 for A = 7.62, 4 for A = 10.16
- 6 for A = 15.24, 9 for A = 22.86
- available circuit sizes:
04 to 64 (for combinations of circuit sizes and row spacing see end of this section).

■ IC socket, wire wrap, open frame



ORDERING INFORMATION

- ICD-XXW3-X070 tin shell/pin, gold plated clip (standard)
- ICD-XXW3-X020 gold plated shell/pin and clip
- 3 for A = 7.62, 4 for A = 10.16
- 6 for A = 15.24, 9 for A = 22.86
- available circuit sizes:
04 to 64 (for combinations of circuit sizes and row spacing see end of this section).

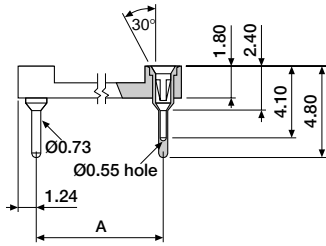
Products are subject to M.O.Q.
*Also available with wire wrap pin length of 6.60mm and 9.40mm.



IC Sockets Dual In Line (DIL)

Machine Tooled Contacts

■ IC socket, low profile, open frame

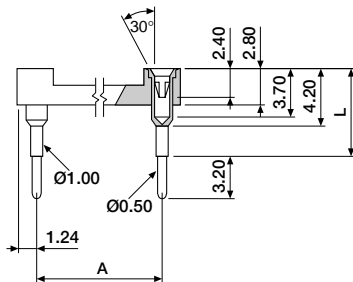


ORDERING INFORMATION

- ICD-XXDS-X470 tin shell, gold plated clip (standard)
- ICD-XXDS-X420 gold plated shell and clip
- 3 for A = 7.62, 4 for A = 10.16
6 for A = 15.24
- available circuit sizes:
04 to 52 (for combinations of circuit sizes and row spacing see end of this section).

Products are subject to M.O.Q.

■ IC socket, extended, open frame

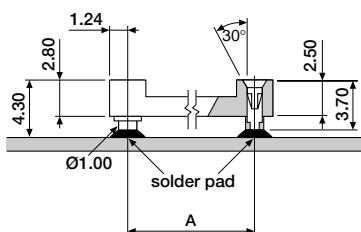


ORDERING INFORMATION

- ICD-XXDE-XX70 tin shell/pin, gold plated clip (standard)
- ICD-XXDE-XX20 gold plated shell/pin and clip
- 0 for L = 6.00, 1 for L = 8.00
2 for L = 10.00, 3 for L = 12.00
4 for L = 15.10, 5 for L = 18.00
- 3 for A = 7.62, 4 for A = 10.16
6 for A = 15.24, 9 for A = 22.86
- available circuit sizes:
04 to 64 (for combinations of circuit sizes and row spacing see end of this section).

Products are subject to M.O.Q.

■ IC socket, surface mount, open frame



ORDERING INFORMATION

- ICD-XXSM-X070 tin shell, gold plated clip (standard)
- 3 for A = 7.62, 4 for A = 10.16
6 for A = 15.24, 9 for A = 22.86
- available circuit sizes:
04 to 64 (for combinations of circuit sizes and row spacing see end of this section).

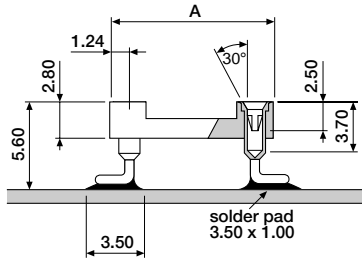
Products are subject to M.O.Q.



IC Sockets Dual In Line (DIL)

Machine Tooled Contacts

■ IC socket, surface mount, open frame



ORDERING INFORMATION

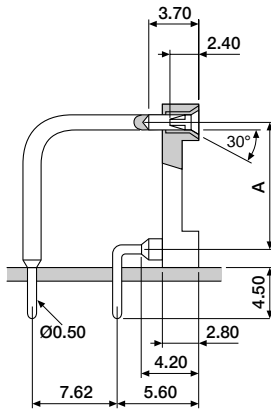
ICD-XXSM-X170 tin shell, gold plated clip (standard)

3 for A = 7.62, 4 for A = 10.16
6 for A = 15.24, 9 for A = 22.86

available circuit sizes:
04 to 64 (for combinations of circuit sizes and row spacing see end of this section).

Products are subject to M.O.Q.

■ IC socket for displays



ORDERING INFORMATION

ICD-XXDP-X070 tin shell/pin, gold plated clip
ICD-XXDP-X020 gold plated shell/pin and clip

3 for A = 7.62, 4 for A = 10.16
6 for A = 15.24

available circuit sizes:
04 to 52 (for combinations of circuit sizes and row spacing see end of this section).

Products are subject to M.O.Q.

■ Available circuit sizes

Spacing Between Rows (A)	7.62mm										10.16mm					10.16mm					22.86mm							
Available Circuit Sizes (XX)	04	06	08	10	14	16	18	20	22	24	28	20	22	24	28	32	24	28	32	36	40	42	48	50	52	52	52	64
ICD-XXDP-X0XX	○	○	○	○	○	○	○	○	○	○	○	○	○	○	○	○	○	○	○	○	○	○	○	○	○	○	○	○
ICD-XXDS-X0XX	○	○	○	○	○	○	○	○	○	○	○	○	○	○	○	○	○	○	○	○	○	○	○	○	○	○	○	○
ICD-XXDS-X4XX	○	○	○	○	○	○	○	○	○	○	○	○	○	○	○	○	○	○	○	○	○	○	○	○	○	○	○	○
ICD-XXDE-XXXX	○	○	○	○	○	○	○	○	○	○	○	○	○	○	○	○	○	○	○	○	○	○	○	○	○	○	○	○
ICD-XXSM-X0XX	○	○	○	○	○	○	○	○	○	○	○	○	○	○	○	○	○	○	○	○	○	○	○	○	○	○	○	○
ICD-XXSM-X1XX	○	○	○	○	○	○	○	○	○	○	○	○	○	○	○	○	○	○	○	○	○	○	○	○	○	○	○	○
ICD-XXW3-X0XX	○	○	○	○	○	○	○	○	○	○	○	○	○	○	○	○	○	○	○	○	○	○	○	○	○	○	○	○