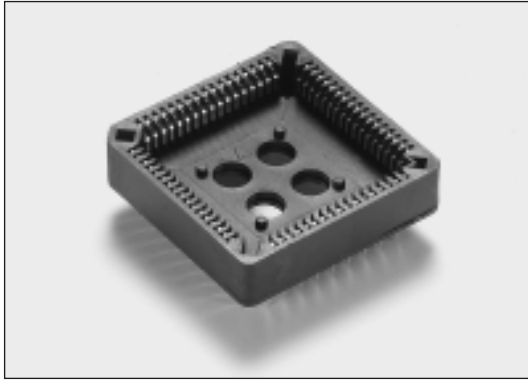




PLCC Sockets

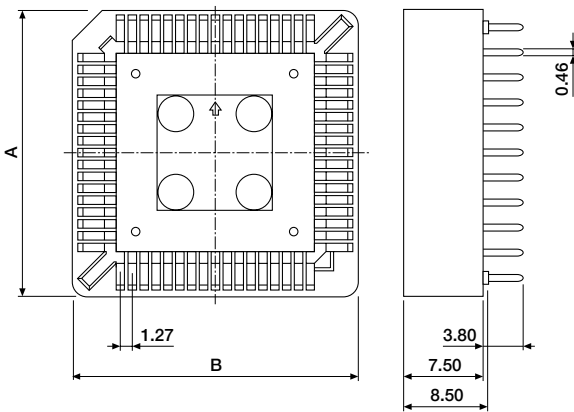
Through-board



A series of commercial, high quality, through-board PLCC sockets. Sockets will accept plastic chip carriers conforming with JEDEC specifications.

- Material : Glass-filled Polyester, UL 94-V0
- Contacts : Phosphor Bronze
- Plating : Tin over Nickel
- Tolerances : A, B and C dimensions $\pm 1.00\text{mm}$
- Electrical : See Chapter 15

■ PLCC Socket (through-board)



ORDERING INFORMATION

PLS-XXDS-0009

available circuit sizes:
20, 28, 32, 44, 52, 68, 84

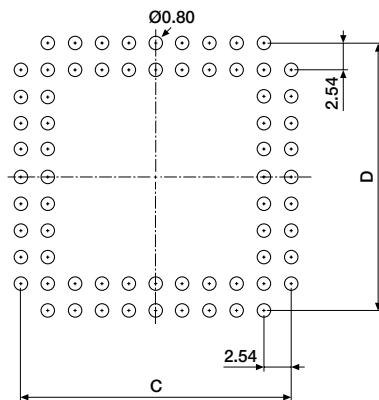
HGS-50EX-0000

extractor tool, 1.10mm wide tip

DIMENSIONS

Circuit size	A	B
20	15.50	15.50
28	18.00	18.00
32	21.20	18.30
44	23.60	23.60
52	25.90	25.90
68	31.80	31.80
84	36.70	36.70

■ PCB layout (component side)



DIMENSIONS

Circuit size	C	D
20	10.16	10.16
28	12.70	12.70
32	12.70	15.24
44	17.78	17.78
52	20.32	20.32
68	25.40	25.40
84	30.48	30.48