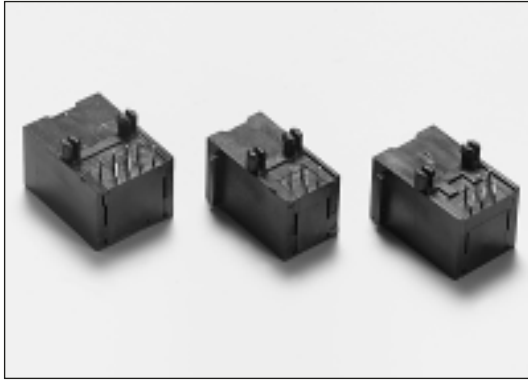




# Data/Telecom Connectors, PCB Mount

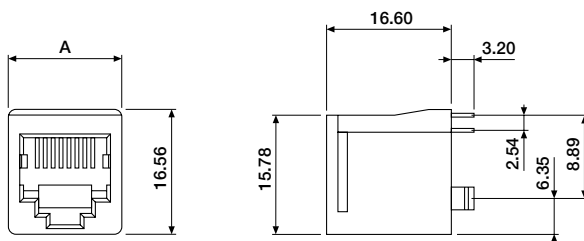
## RJ-10/11/12/45



A range of female PCB connectors for RJ-10/11/12/45 male connectors. The connectors are available in three mounting styles. Right-angle models are available in two different heights of 12.83mm (standard) and 16.33mm. All models are available with optional keying possibilities against M.O.Q.

Material : Polyester, UL 94V-0  
Contacta : Phosphor Bronze  
Plating : Gold over Nickel  
Electrical : See Chapter 15  
Tolerances : If tolerances are important, ask for individual sales drawings

### ■ Straight model

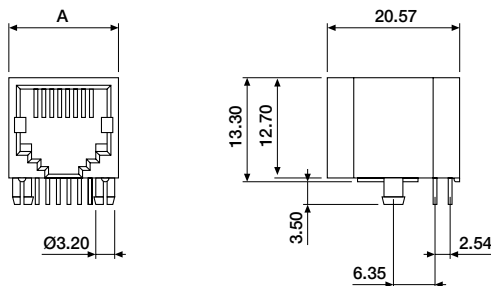


#### ORDERING INFORMATION

<b>MDP-44DS-0029</b>	4 contacts, 4 positions, A = 11.43
<b>MDP-46DS-0029</b>	4 contacts, 6 positions, A = 13.46
<b>MDP-66DS-0029</b>	6 contacts, 6 positions, A = 13.46
<b>MDP-88DS-0029</b>	8 contacts, 8 positions, A = 15.59

Some models are subject to M.O.Q.  
Contact sales office for shielded, surface mount models or models with panel stop.

### ■ Right-angle model

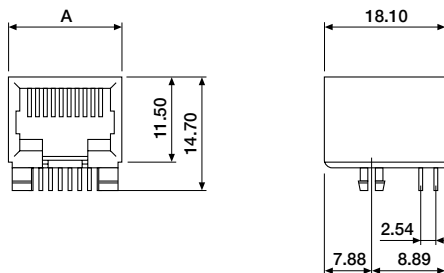


#### ORDERING INFORMATION

<b>MDP-44DS-1029</b>	4 contacts, 4 positions, A = 11.30
<b>MDP-46DS-1029</b>	4 contacts, 6 positions, A = 13.21
<b>MDP-66DS-1029</b>	6 contacts, 6 positions, A = 13.21
<b>MDP-88DS-1029</b>	8 contacts, 8 positions, A = 15.24

Contact sales office for filtered, shielded, surface mount models or models with panel stop.

### ■ Right-angle model, low profile



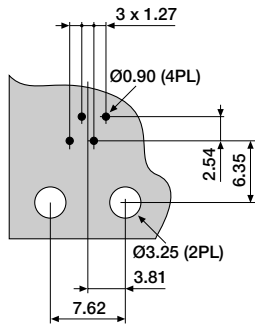
#### ORDERING INFORMATION

<b>MDP-44DS-3029</b>	4 contacts, 4 positions, A = 11.21
<b>MDP-46DS-3029</b>	4 contacts, 6 positions, A = 13.21
<b>MDP-66DS-3029</b>	6 contacts, 6 positions, A = 13.21
<b>MDP-88DS-3029</b>	8 contacts, 8 positions, A = 15.24

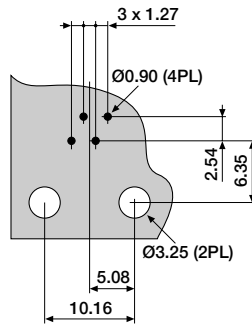
All models are subject to M.O.Q.  
Contact sales office for filtered, shielded, surface-mount models or models with panel stop.



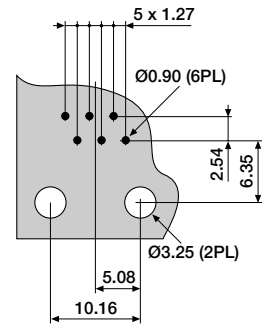
### ■ PCB layouts



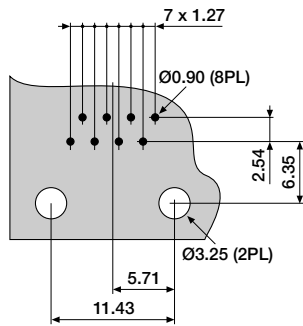
4 contacts, 4 positions



4 contacts, 6 positions



6 contacts, 6 positions



8 contacts, 8 positions