



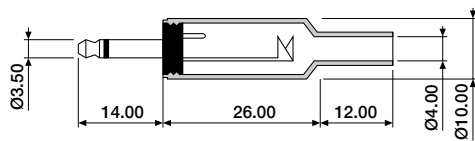
# Jacks and Plugs

## Mono, Stereo and Phono (Cinch/RCA)

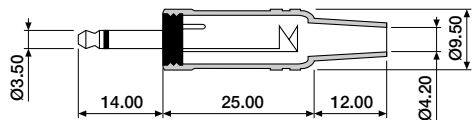


This range of low cost interface connectors mainly designed for mono and stereo audio applications. The most popular models are selected.

### ■ 3.50mm mono plug, cable-mount



3.50mm plastic, long



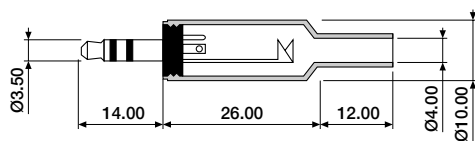
3.50mm metal

#### ORDERING INFORMATION

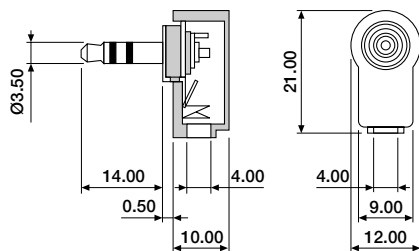
<b>MPM-35HS-0000</b>	3.50mm, male, plastic, long
<b>MPM-35HS-0050</b>	3.50mm, male, metal
<b>MPF-35HS-0000*</b>	3.50mm, female, plastic

\*Model is not shown.  
Contact sales office for right angle models.

### ■ 3.50mm stereo plug/jack, cable-mount



3.50mm plastic



#### ORDERING INFORMATION

<b>SPF-35PM-1000*</b>	3.50mm, female, PCB right-angle, panel mount
<b>SPF-35DS-1000*</b>	3.50mm, female, PCB right-angle
<b>SPF-35HS-0000*</b>	3.50mm, female, plastic
<b>SPM-35HS-0000</b>	3.50mm, male, plastic
<b>SPM-35HS-1000</b>	3.50mm, male, plastic, right-angle

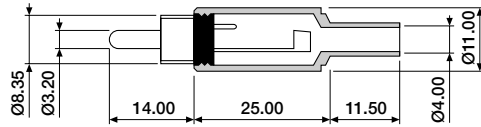
\*Models are not shown.



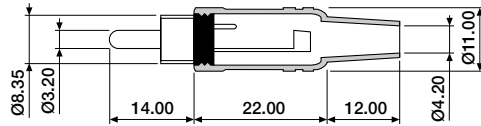
# Jacks and Plugs

## Mono, Stereo and Phono (Cinch/RCA)

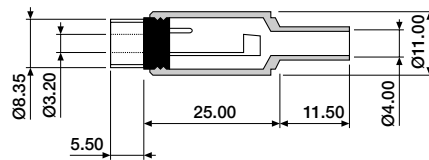
### ■ Phono plug/jack (Cinch/RCA), cable-mount



Plastic



Metal



Plastic

#### ORDERING INFORMATION

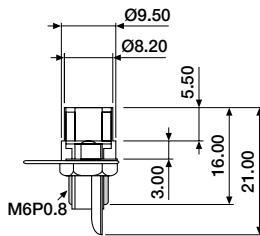
CHM-00HS-0000	male, plastic
CHM-00HS-0050	male, metal
CHM-00HS-1000*	male, plastic, right-angle
CHF-00HS-0000	female, plastic
CHF-00HS-0050*	female, metal (not shown)

\*Models are not shown.

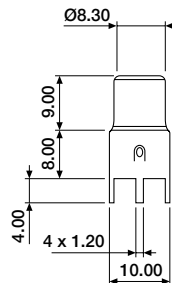
Standard colour is black. If other colours are required change last digit

of order number to: 2 = red  
4 = yellow  
9 = white

### ■ Phono jack, chassis/PCB-mount



CHF-00PM-0000



CHF-00DS-0000

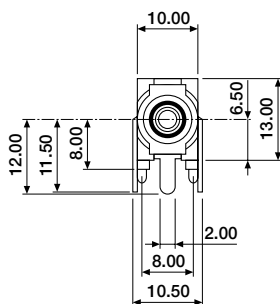
#### ORDERING INFORMATION

CHF-00PM-0000	female, panel mount
CHF-00DS-0000	female, PCB, straight (metal only)
CHF-00DS-1000*	female, PCB, right-angle

Standard colour is black. If other colours are required change last digit

of order number to: 2 = red  
4 = yellow  
9 = white

\*Only available in black or red.



CHF-00CM-1000

