

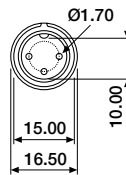
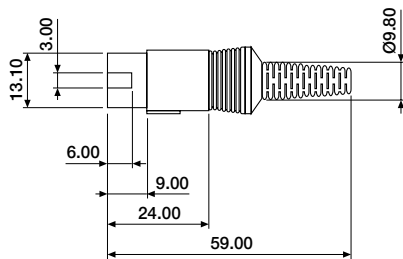


DIN Connectors



A full range of low cost commercial and professional DIN connectors as used for industrial and various computer interface applications. All cable connectors can be supplied as assembled interface cable. As of 500 pcs, the cable connectors can also be supplied in moulded-on quality.

■ DIN, male



ORDERING INFORMATION

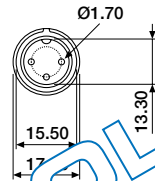
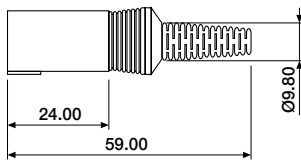
DCM-XXHS-0000 A configuration*
DCM-XXHS-0100 B configuration*

available circuit sizes:

A configuration: 03, 04, 05, 06, 07, 08
B configuration: 05, 08

*See end of this section

■ DIN, female



ORDERING INFORMATION

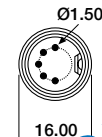
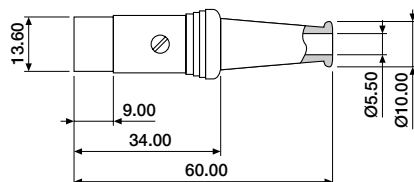
DCM-XXHS-0000 A configuration*
DCF-XXHS-0100 B configuration*

available circuit sizes:

A configuration: 03, 04, 05, 06, 07, 08
B configuration: 05, 08

*See end of this section

■ DIN, male, metal shell



ORDERING INFORMATION

DCM-XXHS-0050 A configuration*
DCM-XXHS-0150 B configuration*

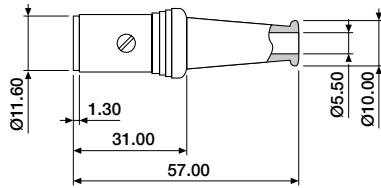
available circuit sizes:

A configuration: 03, 04, 05, 06, 07, 08
B configuration: 05

*See end of this section



■ DIN, female, metal shell



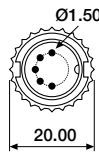
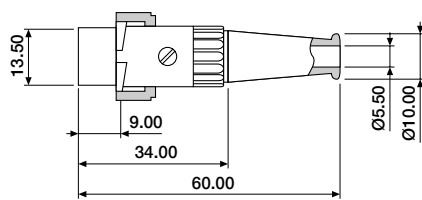
ORDERING INFORMATION

DCF-XXHS-0050 A configuration*
DCF-XXHS-0150 B configuration*

available circuit sizes:
A configuration: 03, 04, 05, 06, 07, 08
B configuration: 05

*See end of this section

■ DIN, male, metal shell, bayonet lock



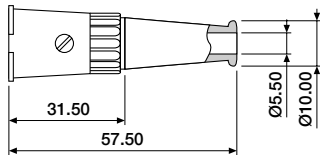
ORDERING INFORMATION

DCM-XXHS-2050 A configuration*
DCM-XXHS-2150 B configuration*

available circuit sizes:
A configuration: 03, 04, 05, 06, 07, 08
B configuration: 05

*See end of this section

■ DIN, female, metal shell, bayonet lock



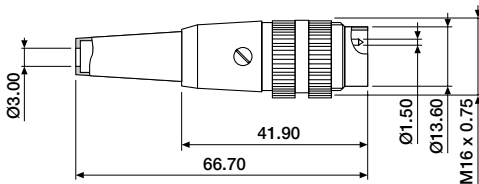
ORDERING INFORMATION

DCF-XXHS-2050 A configuration*
DCF-XXHS-2150 B configuration*

available circuit sizes:
A configuration: 03, 04, 05, 06, 07, 08
B configuration: 05

*See end of this section

■ DIN, male, metal shell, screw lock



ORDERING INFORMATION

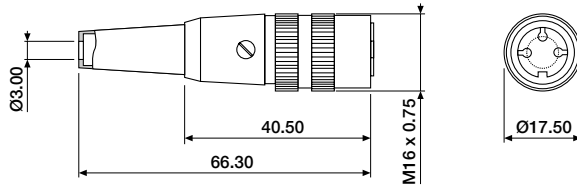
DPM-XXHS-0050 A configuration*
DPM-XXHS-0150 B configuration*

available circuit sizes:
A configuration: 03, 04, 05, 06, 07, 08
B configuration: 05, 07, 08

Contact sales office for availability of right angle models.
*See end of this section.



■ DIN, female, metal shell, screw lock



ORDERING INFORMATION

DPF-XXHS-0050 A configuration*
available circuit sizes:
A configuration: 03, 04, 05, 06, 07, 08

Contact sales office for availability of right angle models.
*See end of this section

■ DIN, female, PCB-mount

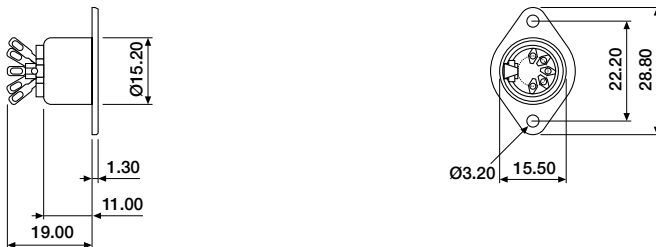


ORDERING INFORMATION

DCF-XXDS-0050 A configuration*
available circuit sizes:
A configuration: 03, 05, 06, 07, 08

*See end of this section

■ DIN, female, panel-mount

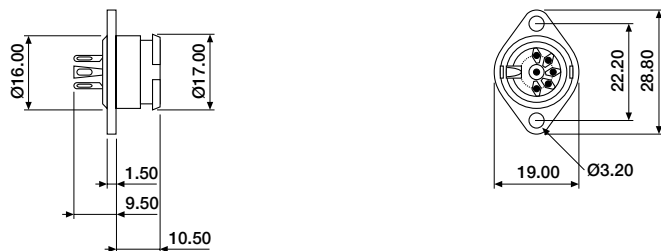


ORDERING INFORMATION

DCF-XXHP-0050 A configuration*
DCF-XXHP-0150 B configuration*
available circuit sizes:
A configuration: 03, 04, 05, 06, 07, 08
B configuration: 05, 08

*See end of this section

■ DIN, female, panel-mount, bayonet lock



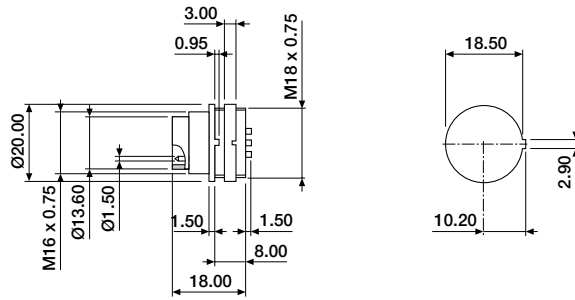
ORDERING INFORMATION

DCF-XXHP-2050 A configuration*
DCF-XXHP-2150 B configuration*
available circuit sizes:
A configuration: 03, 04, 05, 07, 08
B configuration: 05

*See end of this section



■ DIN, male, panel-mount, screw lock (front mounting)



ORDERING INFORMATION

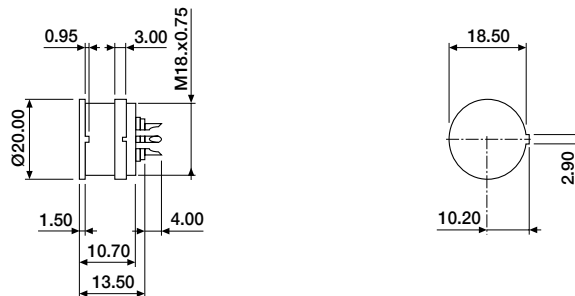
DPM-XXHP-0050 A configuration*
DPM-XXHP-0150 B configuration*

available circuit sizes:
A configuration: 03, 04, 05, 06, 07, 08
B configuration: 05, 07, 08

Contact sales office for availability of models for back panel and PCB mounting.

*See end of this section

■ DIN, female, panel-mount, screw lock (front mounting)



ORDERING INFORMATION

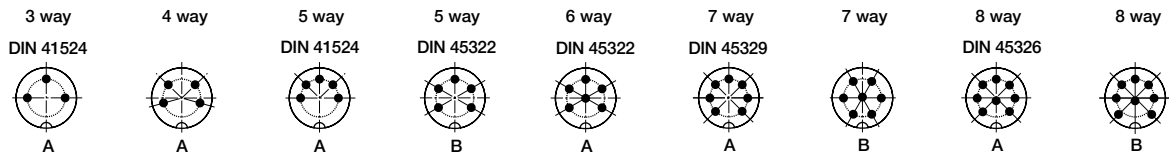
DPF-XXHP-0050 A configuration*
DPF-XXHP-0150 B configuration*

available circuit sizes:
A configuration: 03, 04, 05, 06, 07, 08
B configuration: 05, 07, 08

Contact sales office for availability of models for back panel and PCB mounting.

*See end of this section

■ DIN pin configurations



■ PCB layout, PCB model, straight

