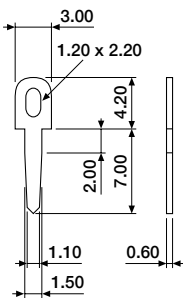


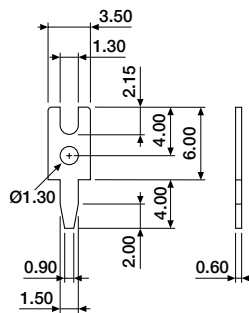
A range of specially selected stamped terminals for use on PCB's. All items are available from stock. In addition to this standard series there are 3500 other models to choose from.

Material : Brass  
Plating : Tin over Nickel

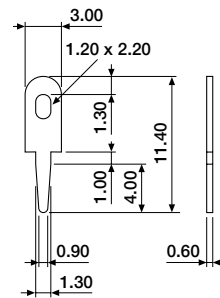
### ■ PCB terminals, IKP series



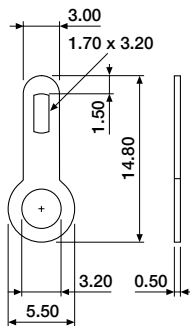
IKP-0101-0000



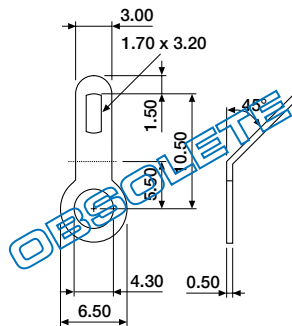
IKP-0102-0000



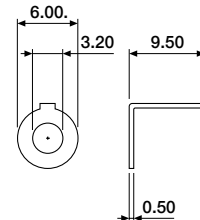
IKP-0103-0000



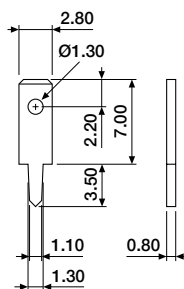
IKP-0111-0000



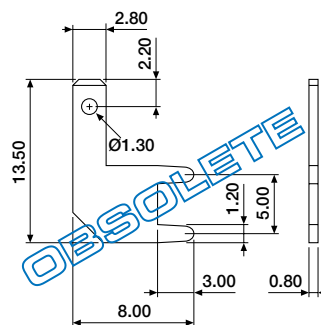
IKP-0112-0000



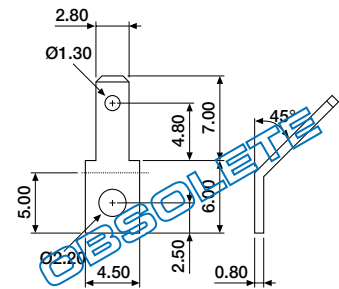
IKP-0115-0000



IKP-0132-0000



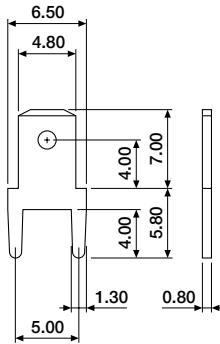
IKP-0134-0000



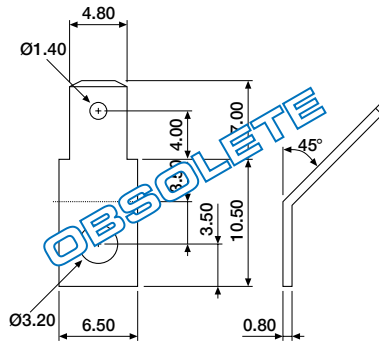
IKP-0135-0000



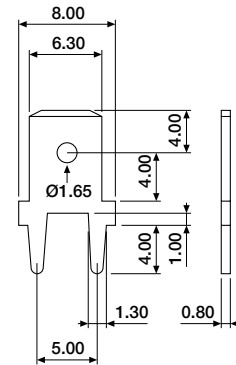
### ■ PCB terminals, IKP series (contd.)



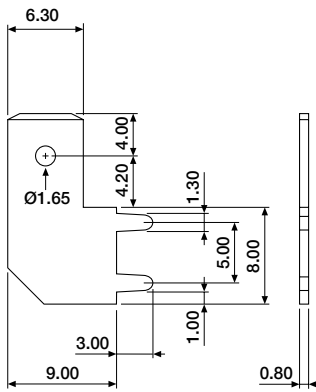
IKP-0136-0000



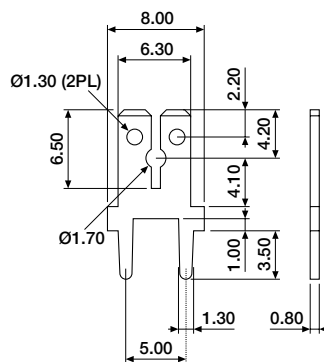
IKP-0138-0000



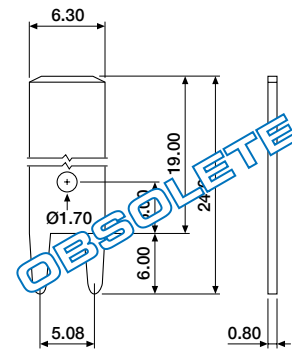
IKP-0139-0000



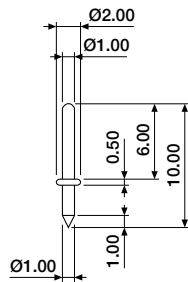
IKP-0140-0000



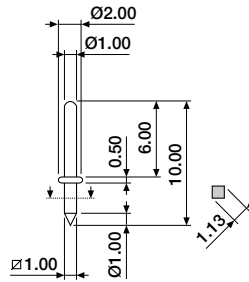
IKP-0142-0000



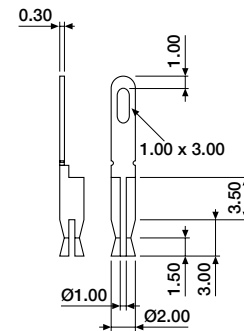
IKP-0143-0000



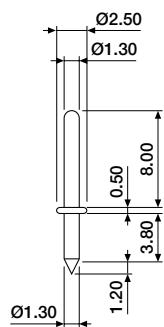
IKP-0151-0000



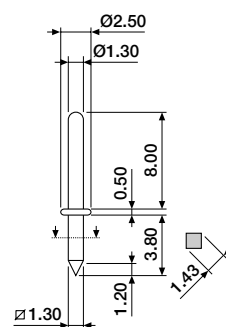
IKP-0152-0000



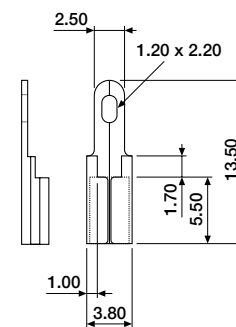
IKP-0153-0000



IKP-0161-0000



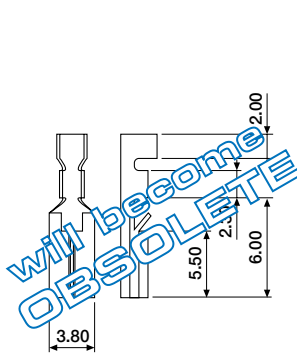
IKP-0162-0000



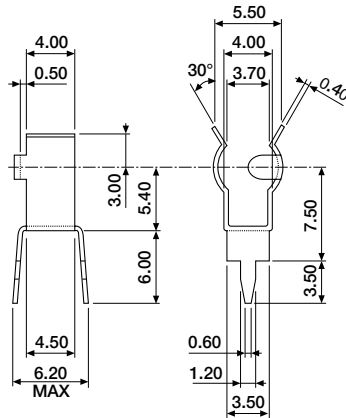
IKP-0163-0000



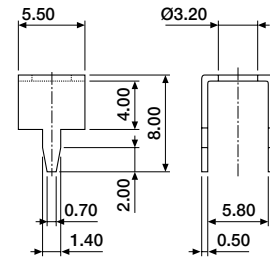
### ■ PCB terminals, IKP series (contd.)



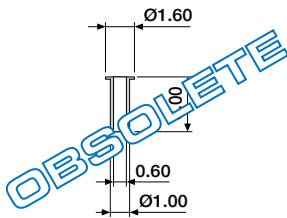
IKP-0164-0000



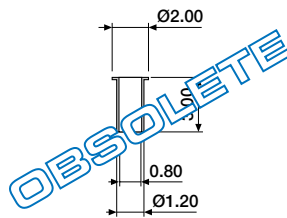
IKP-0171-0000



IKP-0173-0000



IKP-0181-0000



IKP-0183-0000