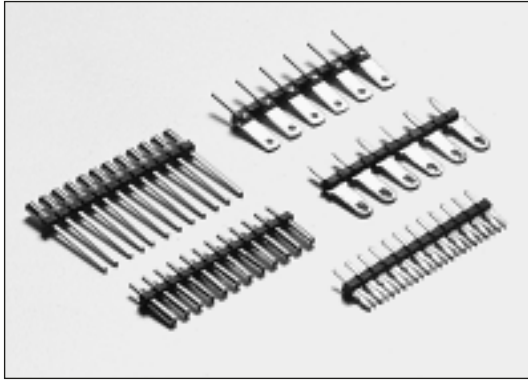




# PCB Terminals On Strip

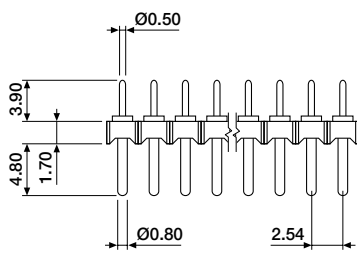
## 2.54mm and 5.08mm Spacing



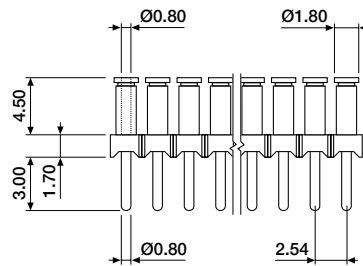
A range of special PCB terminals loaded on breakable plastic strips. Many of these strips can be supplied selectively loaded on request. All terminal strips are 2.45mm wide and equipped with 20 (spacing 2.54mm) or 10 (spacing 5.08mm) terminals.

- Material : Glass-filled Nylon, UL 94V-0
- Contacts : Brass (male)  
Phosphor Bronze (female)
- Plating : Tin over Copper  
Gold over Copper
- Tolerances : If tolerances are important, ask for individual sales drawings.

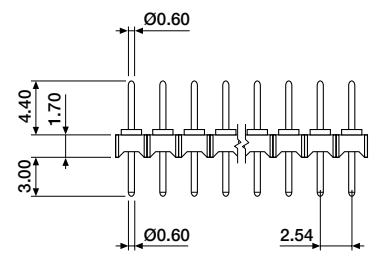
### ■ PCB terminal strips, KTS series



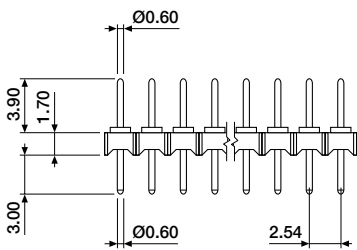
**KTS-0219-0000** tin plated  
**KTS-0219-0020** gold plated



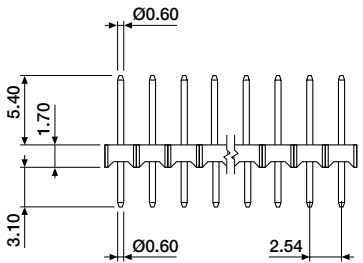
**KTS-0222-0020** gold plated



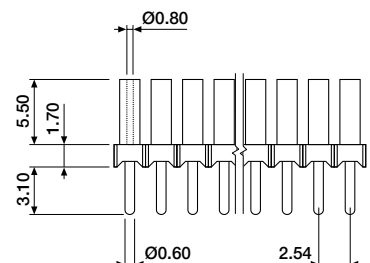
**KTS-0299-0020** gold plated



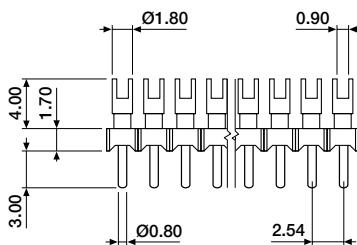
**KTS-0300-0000** tin plated  
**KTS-0300-0020** gold plated



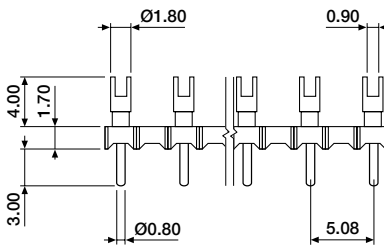
**KTS-0416-0000** tin plated  
**KTS-0416-0020** gold plated



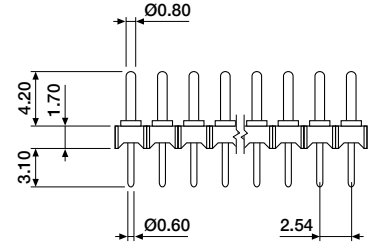
**KTS-0599-0020** gold plated



**KTS-0600-0000** tin plated  
**KTS-0600-0020** gold plated



**KTS-0600-2000** tin plated  
**KTS-0600-2020** gold plated



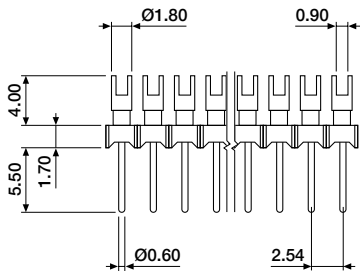
**KTS-0778-0020** gold plated



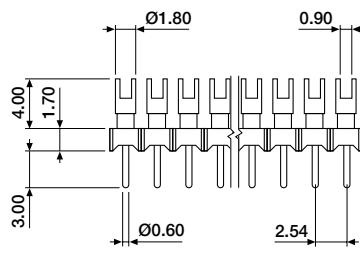
# PCB Terminals On Strip

## 2.54mm and 5.08mm Spacing

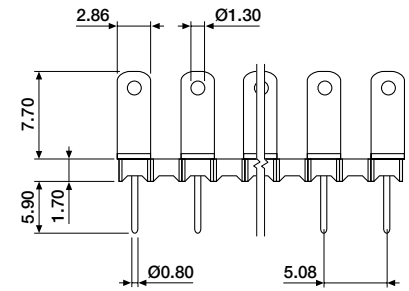
### ■ PCB terminal strips, KTS series (contd.)



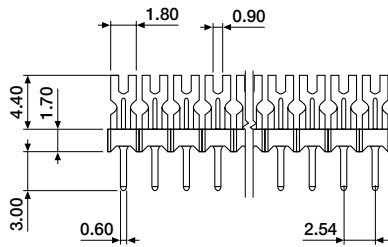
**KTS-0809-0000** tin plated  
**KTS-0809-0020** gold plated



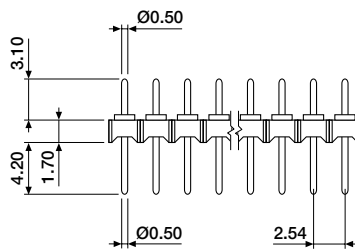
**KTS-0815-0000** tin plated  
**KTS-0815-0020** gold plated



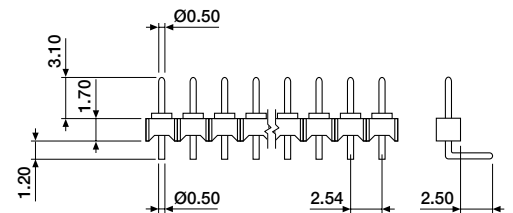
**KTS-0902-2000** tin plated



**KTS-1422-0000** tin plated



**KTS-1594-0000** tin plated  
**KTS-1594-0020** gold plated



**KTS-1594-1000** tin plated  
**KTS-1594-1020** gold plated