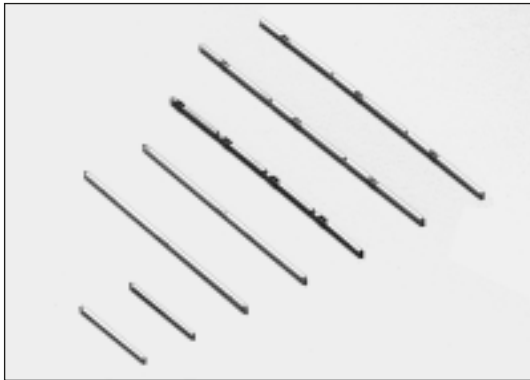




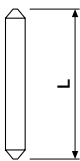
Square Pins



Square pins for wire wrapping, connector or test point applications. The square plain pins are available as loose pieces. Recommended hole size is $\varnothing 0.74\text{mm} \pm 0.05\text{mm}$. The square star pins are supplied in joined strips, in packs of 1000 pieces. Recommended hole size is $\varnothing 0.80\text{mm} \pm 0.05\text{mm}$. Contact sales office for hand held tool with adjustable spring impact head.

Material : Phosphor Bronze
Plating : Tin or Gold over Nickel
Tolerances : If tolerances are important, ask for individual sales drawings

■ Square plain pin



Note : Other pin lengths are available on request.

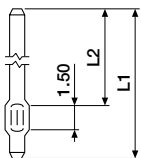
ORDERING INFORMATION

WSP-XXXX-0000 tin plated
WSP-XXXX-0020 gold plated

available lengths in 00.00mm:
1000, 1150, 1250, 1360, 1410, 1460,
1560, 1740, 1860, 1910, 2100, 2350,
2600, 2700, 2850, 2950, 3100*, 3350*,
3750*

*available in tin plating only.

■ Square star pin

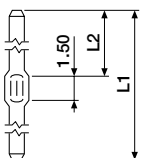


ORDERING INFORMATION

WSP-1050-10X0 L1 = 10.50, L2 = 7.60
WSP-1240-10X0 L1 = 12.40, L2 = 9.70
WSP-1630-10X0 L1 = 16.30, L2 = 13.20

0 for tin
2 for gold

■ Square star pin



ORDERING INFORMATION

WSP-1630-20X0 L1 = 16.30, L2 = 9.70
WSP-1960-20X0 L1 = 19.60, L2 = 13.20
WSP-2440-20X0 L1 = 24.40, L2 = 13.20

0 for tin
2 for gold