



3.00mm and 5.00mm LED Mounts, Straight

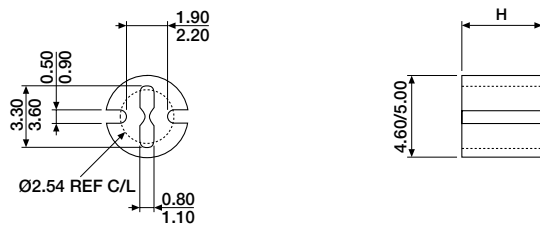
Extruded, Self Retaining



Self-retaining features allow pre-assembly and automatic insertion. Design prevents lead shorting. These mounts are virtually the same diameter as the LED. Model 8350 is specially designed for right-angle applications. High temperature models are recommended for heights smaller than 5.00mm.

Material : PVC, UL 94V-0
Colour : Black
Tolerances : O.D./I.D \pm 0.13mm
H \leq 12.70 \pm 0.13mm
H > 12.70 \leq 19.05mm \pm 0.20mm
H > 19.05 \pm 0.38mm

■ 3.00mm (T1), 2 leads



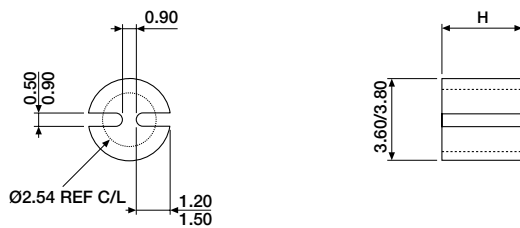
ORDERING INFORMATION

BIV-8205-XXXX*

- 0060 for H = 0.76mm (min. height)
- 2500 for H = 31.75mm (max. height)
- 4010 for H = 1.00mm (min. height)
- 4260 for H = 26.00mm (max. height)

*For each increment of 0.127mm (order no. ending with 0060 to 2500) or 1.00mm (order no. ending with 4010 to 4260) the last four digits of the order number must be increased by 10. Contact sales office for LED's holders assembled with LED's and see last pages of this chapter.

■ 3.00mm (T1), 2 leads



Model 8215
(will be discontinued after stock has run out)

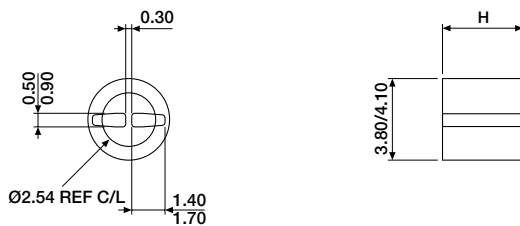
ORDERING INFORMATION

BIV-8215-XXXX*

BIV-8225-XXXX*

- 0060 for H = 0.76mm (min. height)
- 2500 for H = 31.75mm (max. height)
- 4010 for H = 1.00mm (min. height)
- 4260 for H = 26.00mm (max. height)

*For each increment of 0.127mm (order no. ending with 0060 to 2500) or 1.00mm (order no. ending with 4010 to 4260) the last four digits of the order number must be increased by 10. Contact sales office for LED's holders assembled with LED's and see last pages of this chapter.



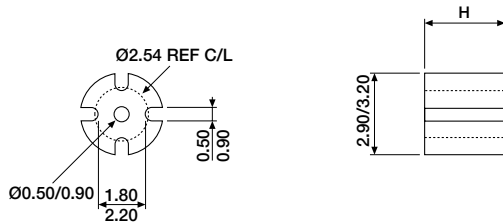
Model 8225



3.00mm and 5.00mm LED Mounts, Straight

Extruded, Self Retaining

■ 3.00mm (T1), 2 leads



ORDERING INFORMATION

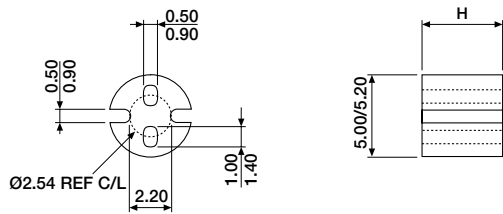
BIV-8235-XXXX*

0060 for H = 0.76mm (min. height)
2500 for H = 31.75mm (max. height)
4010 for H = 1.00mm (min. height)
4260 for H = 26.00mm (max. height)

*For each increment of 0.127mm (order no. ending with 0060 to 2500) or 1.00mm (order no. ending with 4010 to 4260) the last four digits of the order number must be increased by 10.

Contact sales office for LED's holders assembled with LED's and see last pages of this chapter.

■ 5.00mm (T1^{3/4}), 2 leads



ORDERING INFORMATION

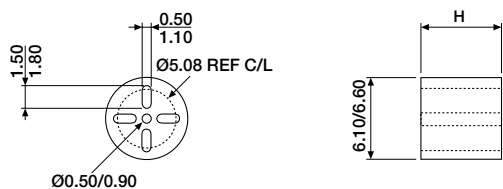
BIV-8305-XXXX*

0060 for H = 0.76mm (min. height)
2500 for H = 31.75mm (max. height)
4010 for H = 1.00mm (min. height)
4260 for H = 26.00mm (max. height)

*For each increment of 0.127mm (order no. ending with 0060 to 2500) or 1.00mm (order no. ending with 4010 to 4260) the last four digits of the order number must be increased by 10.

Contact sales office for LED's holders assembled with LED's and see last pages of this chapter.

■ 5.00mm (T1^{3/4}), 3 leads



ORDERING INFORMATION

BIV-8315-XXXX*

0060 for H = 0.76mm (min. height)
2500 for H = 31.75mm (max. height)
4010 for H = 1.00mm (min. height)
4260 for H = 26.00mm (max. height)

*For each increment of 0.127mm (order no. ending with 0060 to 2500) or 1.00mm (order no. ending with 4010 to 4260) the last four digits of the order number must be increased by 10.

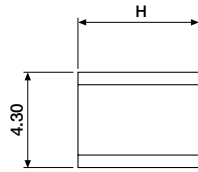
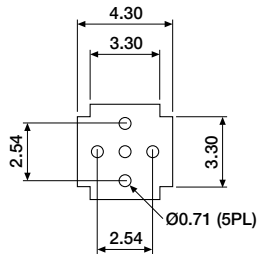
Contact sales office for LED's holders assembled with LED's and see last pages of this chapter.



3.00mm and 5.00mm LED Mounts, Straight

Extruded, Self Retaining

■ 5.00mm (T1^{3/4}), 2 and 3 leads, right-angle



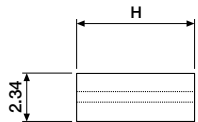
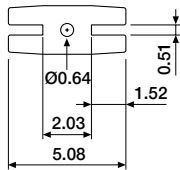
ORDERING INFORMATION

BIV-8355-XXXX*

- 0080 for H = 1.02mm (min. height)
- 1800 for H = 22.86mm (max. height)
- 4050 for H = 5.00mm (min. height)
- 4220 for H = 22.00mm (max. height)

*For each increment of 0.127mm (order no. ending with 0080 to 1800) or 1.00mm (order no. ending with 4050 to 4220) the last four digits of the order number must be increased by 10.
Contact sales office for LED's holders assembled with LED's and see last pages of this chapter.

■ 2.00 x 4.00/5.00mm, 2 and 3 leads



ORDERING INFORMATION

BIV-8405-XXXX*

- 0060 for H = 0.76mm (min. height)
- 2500 for H = 31.75mm (max. height)
- 4010 for H = 1.00mm (min. height)
- 4260 for H = 26.00mm (max. height)

*For each increment of 0.127mm (order no. ending with 0060 to 2500) or 1.00mm (order no. ending with 4010 to 4260) the last four digits of the order number must be increased by 10.
Contact sales office for LED's holders assembled with LED's and see last pages of this chapter.