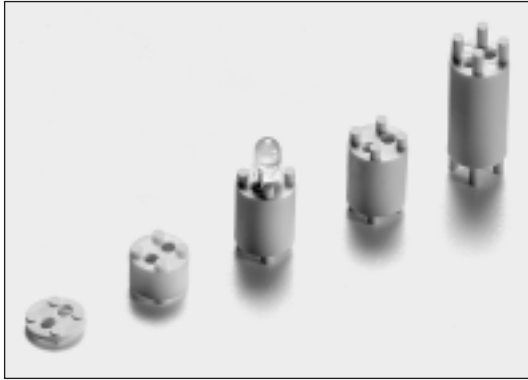




5.00mm LED Mounts, Straight

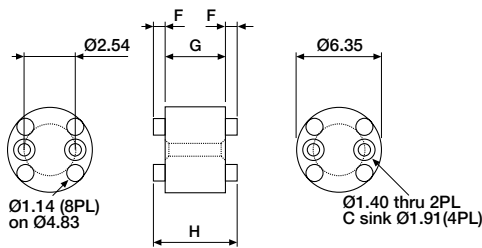
Moulded



This simple yet effective style is symmetrical, providing funnel shaped lead entry holes for ease of assembly. Both sides with stand offs, allows rapid inspection and cleaning. 78 Heights are available.

Material : 6/6 Nylon, UL 94V-2
Colour : White
Tolerances : All dimensions $\pm 0.13\text{mm}$

■ Height 1.27mm to 12.70mm

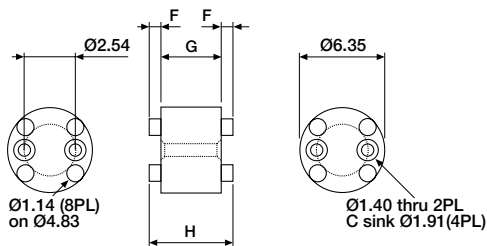


For 'F', 'G' and 'H' dimensions, please refer to ordering information.
*For each increment of 0.254mm the last four digits of the order number must be increased by 20.
Contact sales office for LED's holders assembled with LED's and see last pages of this chapter.

ORDERING INFORMATION

BIV-4800-XXXX*	G = 0.76mm, F = (H - G) 2
	0100 for H = 1.27mm (min.height)
	0400 for H = 5.08mm (max.height)
BIV-4801-XXXX*	G = 3.81mm, F = (H - G) 2
	0400 for H = 5.08mm (min.height)
	0700 for H = 8.89mm (max.height)
BIV-4802-XXXX*	G = 7.62mm, F = (H - G) 2
	0700 for H = 8.89mm (min.height)
	1000 for H = 12.70mm (max.height)

■ Height 1.27mm to 12.70mm



For 'F', 'G' and 'H' dimensions, please refer to ordering information.
*For each increment of 0.508mm the last four digits of the order number must be increased by 40.
Contact sales office for LED's holders assembled with LED's and see last pages of this chapter.

ORDERING INFORMATION

BIV-4803-XXXX*	G = 12.45mm, F = (H - G) 2
	1020 for H = 12.95mm (min.height)
	1380 for H = 17.53mm (max.height)
BIV-4804-XXXX*	G = 17.30mm, F = (H - G) 2
	1400 for H = 17.78mm (min.height)
	1760 for H = 22.35mm (max.height)
BIV-4805-XXXX*	G = 22.35mm, F = (H - G) 2
	1800 for H = 22.86mm (min.height)
	2160 for H = 27.43mm (max.height)