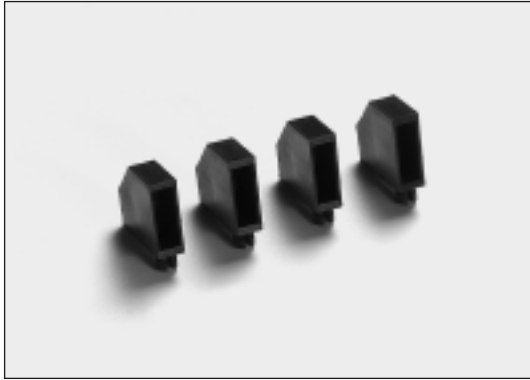




# Rectangular LED Holders

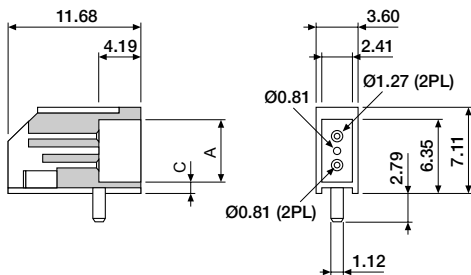
## For 90° LED Mounting, 2 and 3 Leads



The 90° LED holders provide an immediate and economic answer to single and bi-level mounting of virtually all LED types. Choose between individual stations or interlocking styles which form rigid arrays for accurate LED positioning. Interlocking versions enable an unlimited number of stations to be precisely spaced.

Material : Nylon, UL 94V-0  
Colour : Black  
Tolerances : All Dimensions  $\pm 0.13\text{mm}$

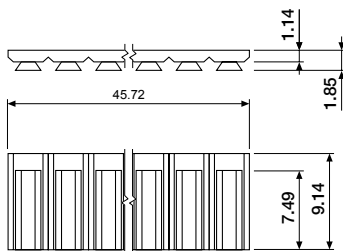
### ■ 2.00 x 4.00mm/5.00mm Rectangular, individual and lockable



#### ORDERING INFORMATION

<b>BIV-6610-0000</b>	individual, A = 4.06, C = 1.78
<b>BIV-6611-0000</b>	individual, A = 5.46, C = 1.09
<b>BIV-6610-4000</b>	top lockable, A = 4.06, C = 1.78
<b>BIV-6611-4000</b>	top lockable, A = 5.46, C = 1.09
<b>BIV-6619-0000</b>	12 station couple strip

Contact sales office for LED holders assembled with LED's and see last pages of this section.



12 station couple strip