



# Light Pipes

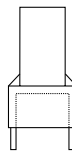
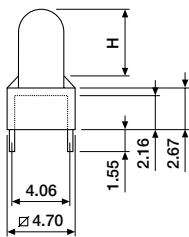
## For Surface Mount LED's



Light pipes are ideal for applications where an automatically placed SM LED needs to have its output redirected to a front panel or enclosure. Light pipes are produced from clear polycarbonate for maximum light transmission. Light pipes will also protect circuits from accidental damage from ESD by isolating the PCB from potential contact.

Material : Polycarbonate UL 94V-0

### ■ Straight with round or flat face

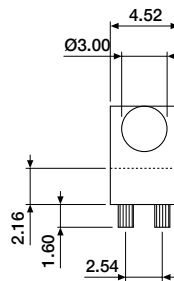
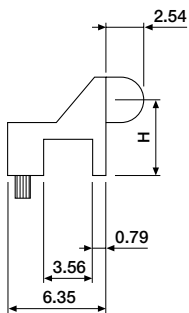


#### ORDERING INFORMATION

|                       |                                     |
|-----------------------|-------------------------------------|
| <b>BLP-2000-XXXX*</b> | round face                          |
| <b>BLP-2010-XXXX*</b> | flat face                           |
|                       |                                     |
|                       | 0190 for H = 2.41mm, (min. height)  |
|                       | 0890 for H = 11.30mm, (max. height) |

\*For each increment of 1.27mm the last four digits of the order number must be increased by 100.

### ■ Straight with round or flat face

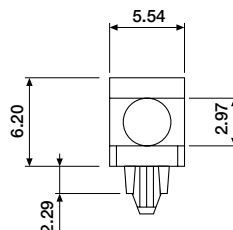
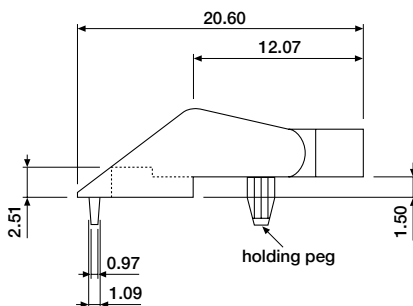


#### ORDERING INFORMATION

|                       |                                     |
|-----------------------|-------------------------------------|
| <b>BLP-3000-XXXX*</b> | round face                          |
| <b>BLP-3010-XXXX*</b> | flat face                           |
|                       |                                     |
|                       | 0300 for H = 3.81mm, (min. height)  |
|                       | 1500 for H = 19.05mm, (max. height) |

\*For each increment of 1.27mm the last four digits of the order number must be increased by 100.

### ■ Right-angle with round or rectangular face



#### ORDERING INFORMATION

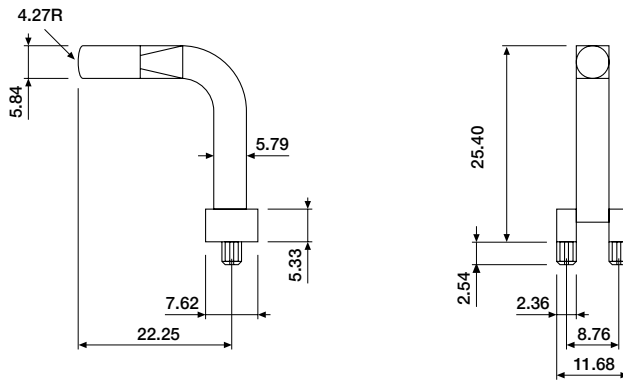
|                      |                            |
|----------------------|----------------------------|
| <b>BLP-3110-0000</b> | flat face (not drawn)      |
| <b>BLP-3111-0000</b> | flat face with holding peg |
| <b>BLP-3120-0000</b> | flat rectangular face      |



# Light Pipes

## For Surface Mount LED's

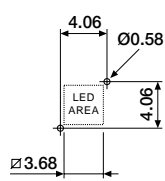
### ■ Right-angle with press fit PCB mount



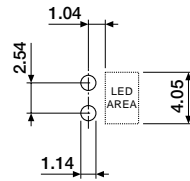
#### ORDERING INFORMATION

BLP-3500-2000

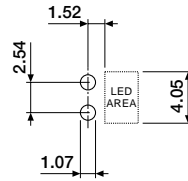
### ■ PCB layout



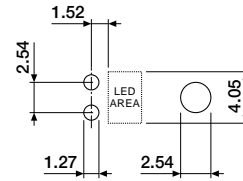
Series 2000/2010



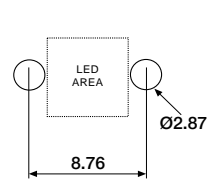
Series 3000/3010



Series 3110/3120



Series 31111



Series 3500



# Light Pipes

## For Panel Mount



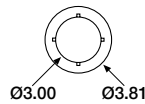
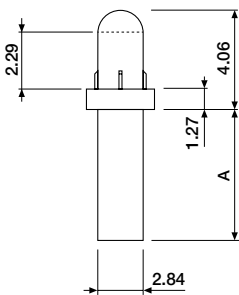
Light pipes are ideal for applications where an automatically placed SM LED needs to have its output redirected to a front panel or enclosure. Light pipes are produced from clear polycarbonate for maximum light transmission. Light pipes will also protect circuits from accidental damage from ESD by isolating the PCB from potential contact.

Material : Polycarbonate UL 94V-0

Colour : Clear (standard)

Red, Green, Blue and Yellow are available against M.O.Q.

### ■ Straight for panel hole 3.02/3.12mm



#### ORDERING INFORMATION

BLP-210-XXXX

flat face (rear mount)

BLP-4000-XXXX

round face (rear mount)

0250 A = 3.18mm

0500 A = 6.35mm

0700 A = 8.89mm

0750 A = 9.53mm

1000 A = 12.70mm

1250 A = 15.88mm

1500 A = 19.05mm

BLP-4100-XXXX

round face front mount, low profile

BLP-4400-XXXX

round face front mount

BLP-4500-XXXX

round face front mount, low profile

Many other models added  
Contact sales office