



Light Pipes

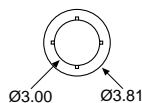
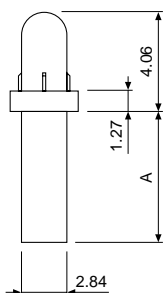
For Panel Mount



Light pipes are ideal for applications where an automatically placed SM LED needs to have its output redirected to a front panel or enclosure. Light pipes are produced from clear polycarbonate for maximum light transmission. Light pipes will also protect circuits from accidental damage from ESD by isolating the PCB from potential contact.

Material : Polycarbonate UL 94V-0
Colour : Clear (standard)
Red, Green, Blue and Yellow are available against M.O.Q.

■ Straight for panel hole 3.02/3.12mm



ORDERING INFORMATION

BLP-4000-XXXX

round face

0250 A = 3.18mm
0500 A = 6.35mm
0700 A = 8.89mm
0750 A = 9.53mm
1000 A = 12.70mm
1250 A = 15.88mm
1500 A = 19.05mm

