



Shoulder Washers

For TO-3, TO-3P, TO-66, TO-218, TO-220 and TO-247 Devices

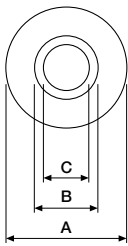


A series of high temperature shoulder washers. Products can be used up to a maximum service temperature of 260°C and are chemically inert (no known solvents under 200°C).

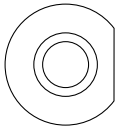
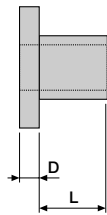
Material : 40% Glass-filled PPS

Tolerances : ± 0.13mm

■ Shoulder washer



Model A



Model B

ORDERING INFORMATION

BIV 5 00 XXX

see dimension chart below

DIMENSIONS

Order No.	A	B	C	D	L	Model
0000	7.11	3.68	3.00	1.19	0.79	A
0001	7.92	4.50	3.66	1.19	0.79	A
0002	7.92	4.83	3.71	1.19	0.79	A
0010	5.46	3.43	2.95	1.02	0.81	A
0020	6.22	3.56	3.02	1.02	1.02	B
0030	7.11	3.56	2.84	1.07	3.18	A
0031	7.11	3.81	2.84	1.07	3.18	A
0040	7.11	3.81	2.84	1.07	4.70	A

OBSELETE
Contact sales office for other dimensions