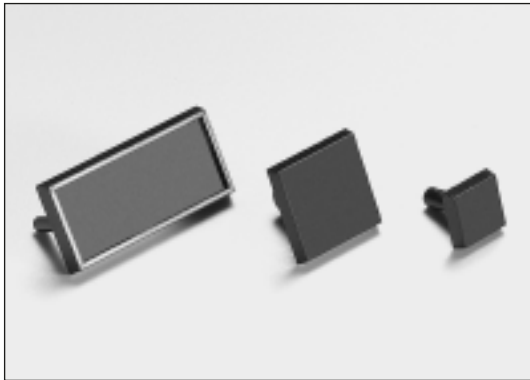




Connector Cut-Out Covers

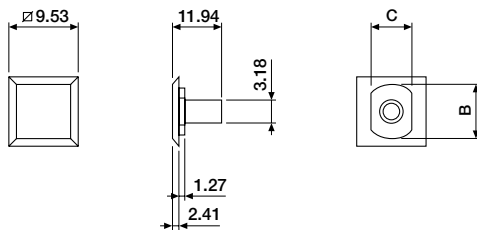
D-Sub, Micro Ribbon, D-Hole



Available in twenty sizes and styles, these cut-out covers provide a cost effective solution for covering cut-outs and ports for D-sub miniature, micro ribbon, D-Hole and flange-mounted connectors. All covers will be supplied with fasteners.

Material : ABS, UL 94V-0
Colour : Black
Tolerances : All Dimensions $\pm 0.13\text{mm}$

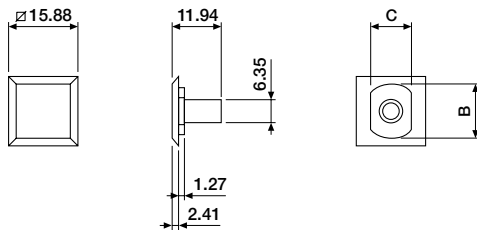
■ D-Hole mount cut-out



ORDERING INFORMATION

BIV-1300-0000	B = 4.75mm, C = 3.94mm (SMC)
BIV-1300-0001	B = 6.22mm, C = 5.46mm (mini coax)
BIV-1300-0002	B = 7.01mm, C = 5.97mm (SMC/m.coax)

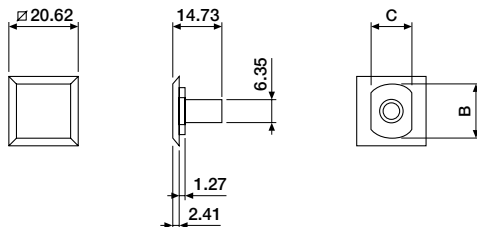
■ D-Hole mount cut-out



ORDERING INFORMATION

BIV-1310-0000	B = 9.14mm, C = 7.87mm (TNC/BNC)
BIV-1310-0001	B = 10.92mm, C = 9.53mm (TNC/coax)
BIV-1310-0002	B = 12.57mm, C = 10.92mm (BNC/SHV)

■ D-Hole mount cut-out



ORDERING INFORMATION

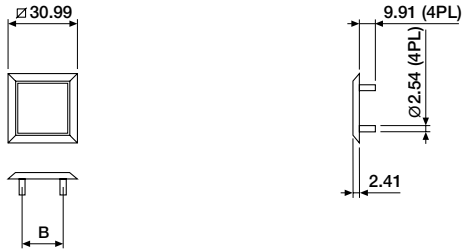
BIV-1320-0000	B = 15.88mm, C = 13.21mm (N series)
BIV-1320-0001	B = 19.05mm, C = 16.00mm (twin video)



Connector Cut-Out Covers

D-Sub, Micro Ribbon, D-Hole

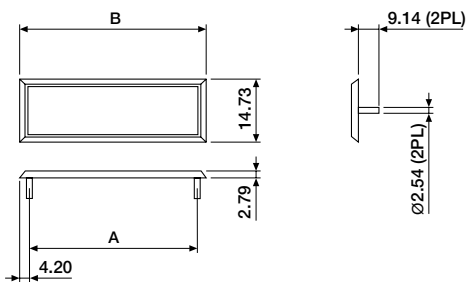
■ For flange-mount receptacle cut-out



ORDERING INFORMATION

BIV-1400-0000	B = 23.01mm
BIV-1401-0000	B = 24.61mm

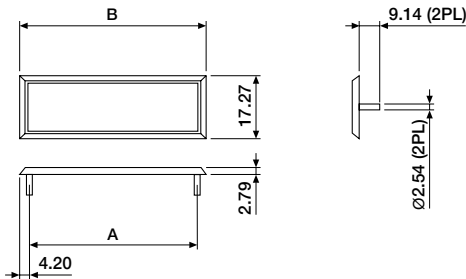
■ D-Connector cut-out



ORDERING INFORMATION

BIV-1500-0000	A = 24.99mm, B = 31.24mm (9-way)
BIV-1501-0000	A = 33.32mm, B = 39.62mm (15-way)
BIV-1502-0000	A = 47.04mm, B = 53.34mm (25-way)
BIV-1503-0000	A = 63.50mm, B = 69.85mm (37-way)
BIV-1504-0000	A = 61.11mm, B = 67.56mm (50-way)

■ Micro ribbon/centronics connector cut-out



ORDERING INFORMATION

BIV-1600-0000	A = 35.99mm, B = 44.32mm (14-way)
BIV-1601-0000	A = 46.79mm, B = 55.12mm (24-way)
BIV-1602-0000	A = 59.74mm, B = 68.07mm (36-way)
BIV-1603-0000	A = 74.85mm, B = 83.19mm (50-way)
BIV-1604-0000	A = 89.97mm, B = 98.43mm (64-way)