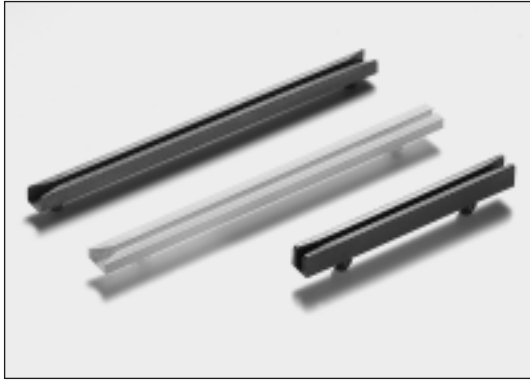




Rack and Panel Card Guides, Narrow

For 1.60mm PCB'S



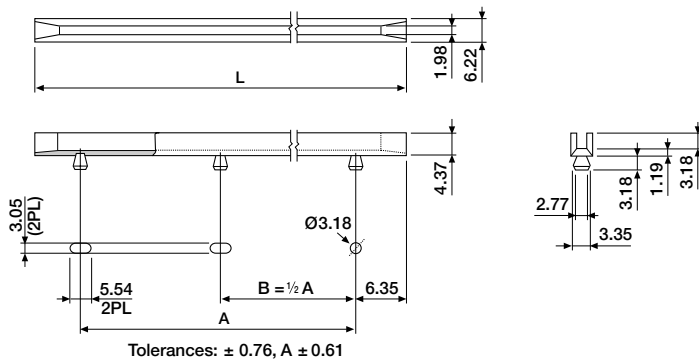
Designed for higher density applications, the narrow models are less than 6.35mm wide and not only afford maximum density, but because of their minimum widths, allow extra space for optimum air circulation. Anti-static models are molded from static dissipative material and are designed for ESD applications requiring protection of static sensitive devices. All card guides can be supplied with a stainless steel card insert for EMI/RFI protection.

Panel Thickness : 1.19 to 2.29mm

Material : 6/6 Nylon, UL 94V-0 / UL 94V-2. Anti-static models are filled with permanently bound-in electrical grade PAN fibres in accordance with MIL-B 81795B requirements.

Colour : Natural and Grey for A static models

■ Narrow, 2 and 3 hole mounting



UL 94V-2 material

ORDERING INFORMATION

BIV-280X-XXXX* $A = L - 12.70\text{mm}$, 2 holes

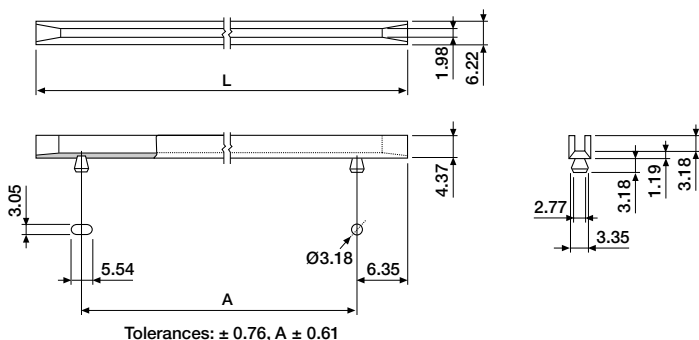
- 0500 for $L = 63.50\text{mm}$ (min. Length)
- 1700 for $L = 215.90\text{mm}$ (max. Length)
- 0 = standard
- 5 = with stainless steel insert

BIV-281X-XXXX* $A = L - 12.70\text{mm}$, 3 holes

- 1400 for $L = 177.80\text{mm}$ (min. Length)
- 1700 for $L = 215.90\text{mm}$ (max. Length)
- 0 = standard
- 5 = with stainless steel insert

*For each increment of 12.70mm the last four digits of the order number must be increased by 100.

■ Narrow, 2 hole mounting, anti-static model



UL 94V-0 material

ORDERING INFORMATION

BIV-285X-XXXX* $A = L - 12.89\text{mm}$

- 0500 for $L = 64.47\text{mm}$ (min. Length)
- 1700 for $L = 219.13\text{mm}$ (max. Length)
- 0 = standard
- 5 = with stainless steel insert

*For each increment of 12.70mm the last four digits of the order number must be increased by 100.

Note : Slotting or elongating of second and third mounting holes is recommended to allow for length variations in molding and assembly ease