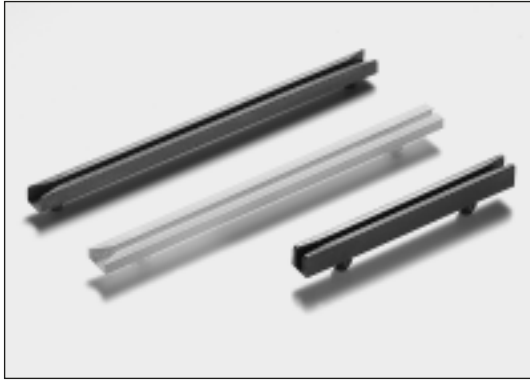




# Rack and Panel Card Guides, Deep Channel

## For 1.60mm, 2.40mm and 3.20mm PCB's

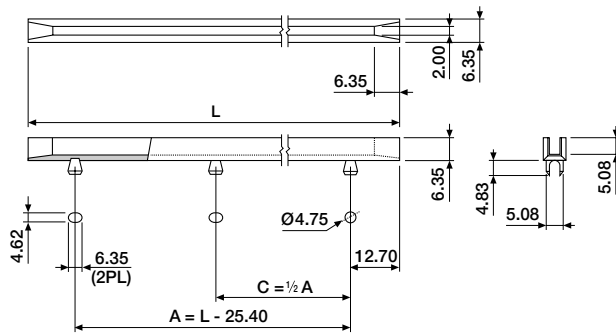


These guides have a 5.08mm slot depth providing maximum board retention for wide boards and high vibration and shock applications. The guides are double ended, with panel entry, so that they may be used in various length combinations to obtain virtually any overall length desired. All card guides can be supplied with a stainless steel channel insert for EMI/RFI protection.

Panel Thickness : 1.19 to 2.29mm.

Material : Nylon, UL 94V-0  
Colour : Black

### ■ For 1.60mm PCB's



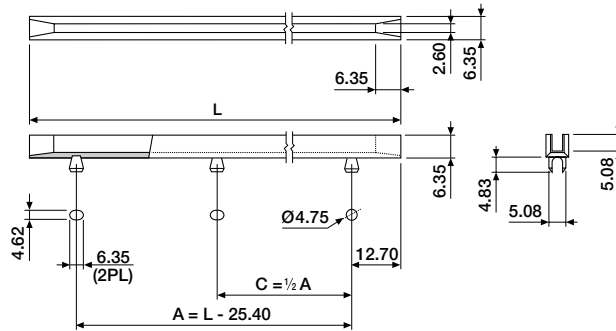
Tolerances: L ± 1.57mm, A ± 0.81

#### ORDERING INFORMATION

BIV-220X-0500	L = 63.50
BIV-220X-0900	L = 114.30
BIV-220X-1200	L = 152.40
BIV-220X-1600	L = 203.20, C = 88.90

0 = standard  
5 = with stainless steel insert

### ■ For 2.40mm PCB's



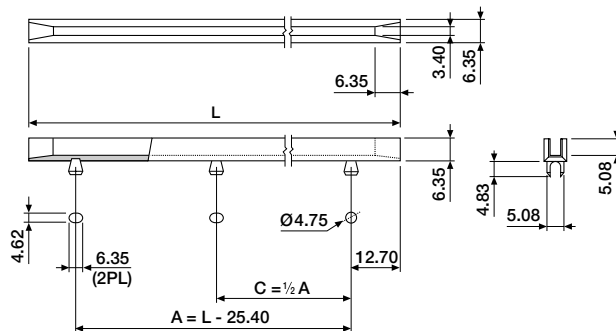
Tolerances: L ± 1.57mm, A ± 0.81

#### ORDERING INFORMATION

BIV-221X-0900	L = 114.30
BIV-221X-1200	L = 152.40
BIV-221X-1600	L = 203.20, C = 88.90

0 = standard  
5 = with stainless steel insert

### ■ For 3.20mm PCB's



Tolerances: L ± 1.57mm, A ± 0.81

#### ORDERING INFORMATION

BIV-222X-0900	L = 114.30
BIV-222X-1200	L = 152.40
BIV-222X-1600	L = 203.20, C = 88.90

0 = standard  
5 = with stainless steel insert

Note : Slotting or elongating of second and third mounting holes is recommended to allow for length variations in molding and assembly ease