



Hexagonal Threaded Spacers, Female/Male

Brass and Steel

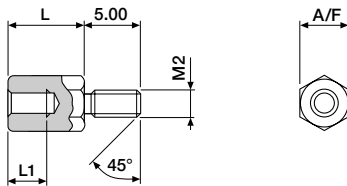


A wide range of hexagonal nickel plated brass or zinc-chromated steel spacers. All indicated lengths are standard available, other dimensions available on request with a minimum order quantity of 5000 pcs.

Available threads:

Brass	:	M2, M2.5, M3, M4, M5, M6
Steel	:	M2, M2.5, M3, M4, M5, M6, M8
Stainless Steel	:	M3, M4, M5, M6, M8
Aluminium	:	M3, M4, M5, M6, M8
Brass/self tapping	:	M2,5 M3, M4, M5, M6
Steel/self tapping	:	M2,5 M3, M4, M5, M6
Tolerances	:	± 0.10mm

■ M2 Brass

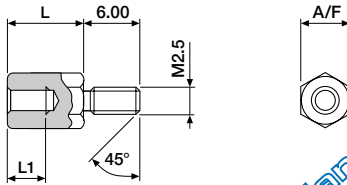


L1 = 3.00mm (L = 05, 06)
 L1 = 5.00mm (L = 08)
 L1 = 6.00mm (L = 10 and up)

ORDERING INFORMATION

SPH-20FM-4000-XX A/F = 4.00mm, Brass
 available lengths: (L = mm)
 05, 06, 08, 10, 12, 15, 18, 20, 25, 30,
 35,
 40, 45, 50

■ M2.5 Brass

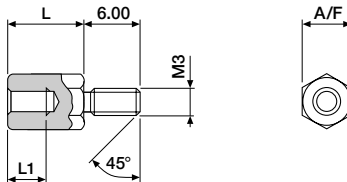


L1 = 3.00mm (L = 05, 06)
 L1 = 5.00mm (L = 08)
 L1 = 6.00mm (L = 10)
 L1 = 7.00mm (L = 12)
 L1 = 10.00mm (L = 15 and up)

ORDERING INFORMATION

SPH-25FM-4000-XX A/F = 4.00mm, Brass
SPH-25FM-5000-XX A/F = 5.00mm, Brass
 available lengths: (L = mm)
 05, 06, 08, 10, 12, 15, 18, 20, 25, 30,
 35,
 40, 50, 55, 60

■ M3 Brass/steel



L1 = 3.00mm (L = 05, 06)
 L1 = 5.00mm (L = 08)
 L1 = 6.00mm (L = 10)
 L1 = 7.00mm (L = 12)
 L1 = 10.00mm (L = 15 and up)

ORDERING INFORMATION

SPH-30FM-5000-XX A/F = 5.00mm, Brass
SPH-30FM-5500-XX A/F = 5.50mm, Brass
SPH-30FM-5510-XX A/F = 5.50mm, Steel
SPH-30FM-6010-XX A/F = 6.00mm, Steel
 available lengths: (L = mm)
 05, 06, 08, 10, 12, 15, 18, 20, 25, 30,
 35, 40, 45, 50, 55, 60, 65, 70

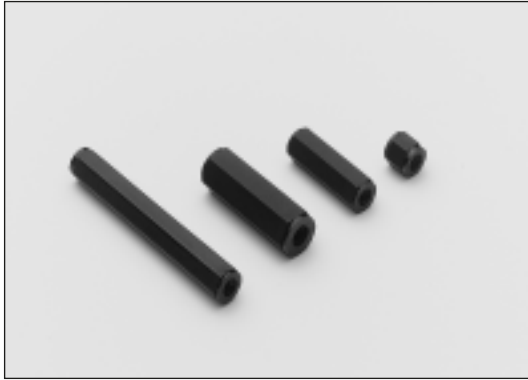
Max. available length for brass is 60.00mm.





Hexagonal Threaded Spacers, Female/Female

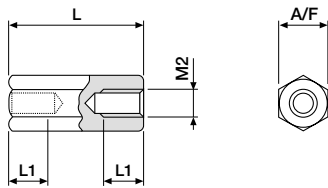
Polyamide



A wide range of polyamide hexagonal spacers available with threads of M2, M2.5, M3, M4, M5 and M6.

Colour : Black

■ M2



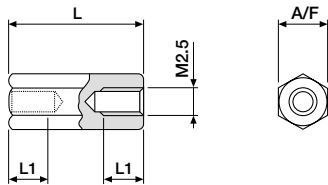
L1 = 10.00mm
Till L = 16.00mm threadlength is total length.
With L = 16, 17, 18, 19.00mm L1 = 1/2 L

ORDERING INFORMATION

SPH-20FF-5070-XX A/F = 5.00mm
available lengths: (L)
06 = 6.00mm (min.)
45 = 45.00mm (max.)

Available in increments of 1.00mm.

■ M2.5



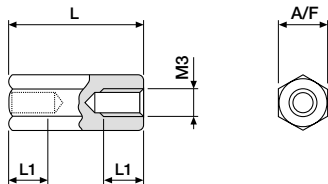
L1 = 10.00mm
Till L = 16.00mm threadlength is total length.
With L = 16, 17, 18, 19.00mm L1 = 1/2 L

ORDERING INFORMATION

SPH-25FF-5070-XX A/F = 5.00mm
available lengths: (L)
04 = 4.00mm (min.)
55 = 55.00mm (max.)

Available in increments of 1.00mm.

■ M3



L1 = 10.00mm
Till L = 16.00mm threadlength is total length.
With L = 16, 17, 18, 19.00mm L1 = 1/2 L

ORDERING INFORMATION

SPH-30FF-6070-XX A/F = 6.00mm
available lengths: (L)
05 = 5.00mm (min.)
65 = 65.00mm (max.)

Available in increments of 1.00mm.