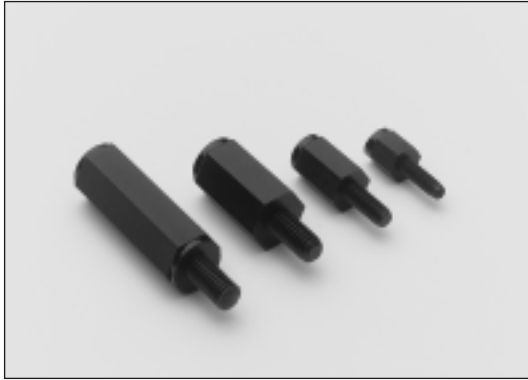




Hexagonal Threaded Spacers, Female/Male

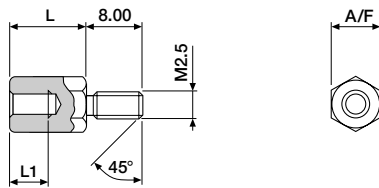
Polyamide



A wide range of polyamide hexagonal spacers available with threads of M2.5, M3, M4 and M5.

Colour : Black

■ M2.5



- L1 = 3.00mm (L = 05)
- L1 = 3.50mm (L = 06, 07)
- L1 = 5.00mm (L = 08, 09)
- L1 = 7.00mm (L = 10, 11)
- L1 = 9.00mm (L = 12, 13, 14)
- L1 = 10.00mm (L = 15 and up)

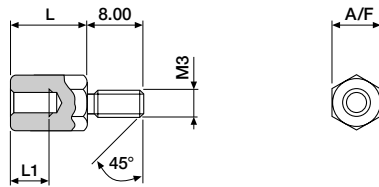
ORDERING INFORMATION

SPH-25FM-5070-XX A/F = 5.00mm

available lengths: (L)
05 = 5.00mm (min.)
45 = 45.00mm (max.)

Available in increments of 1.00mm.

■ M3



- L1 = 3.00mm (L = 05)
- L1 = 3.50mm (L = 06, 07)
- L1 = 5.00mm (L = 08, 09)
- L1 = 7.00mm (L = 10, 11)
- L1 = 9.00mm (L = 12, 13, 14)
- L1 = 10.00mm (L = 15 and up)

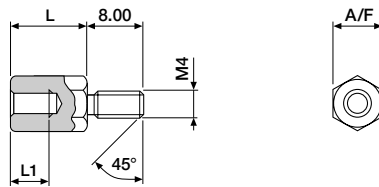
ORDERING INFORMATION

SPH-30FM-6070-XX A/F = 6.00mm

available lengths: (L)
05 = 5.00mm (min.)
60 = 60.00mm (max.)

Available in increments of 1.00mm.

■ M4



- L1 = 3.00mm (L = 05)
- L1 = 3.50mm (L = 06, 07)
- L1 = 5.00mm (L = 08, 09)
- L1 = 7.00mm (L = 10, 11)
- L1 = 9.00mm (L = 12, 13, 14)
- L1 = 10.00mm (L = 15 and up)

ORDERING INFORMATION

SPH-40FM-8070-XX A/F = 8.00mm

available lengths: (L)
05 = 5.00mm (min.)
65 = 65.00mm (max.)

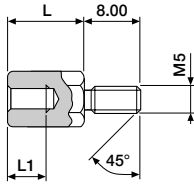
Available in increments of 1.00mm.



Hexagonal Threaded Spacers, Female/Male

Polyamide

■ M5



- L1 = 3.00mm (L = 05)
- L1 = 3.50mm (L = 06, 07)
- L1 = 5.00mm (L = 08, 09)
- L1 = 7.00mm (L = 10, 11)
- L1 = 9.00mm (L = 12, 13, 14)
- L1 = 10.00mm (L = 15 and up)

ORDERING INFORMATION

SPH-50FM-1070-XX A/F = 10.00mm
available lengths: (L)
05 = 5.00mm (min.)
65 = 65.00 mm (max.)

Available in increments of 1.00mm.