



Hexagonal Threaded Spacers, Female/Female

Brass and Steel

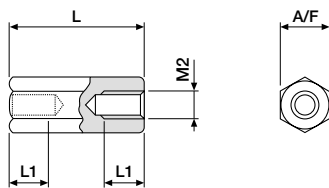


A wide range of hexagonal nickel plated brass or zinc-chromated steel spacers. All indicated lengths are standard available, other dimensions available on request with a minimum order quantity of 5000 pcs.

Available threads:

Brass	:	M2, M2.5, M3, M4, M5, M6
Steel	:	M2, M2.5, M3, M4, M5, M6, M8
Stainless Steel	:	M3, M4, M5, M6, M8
Aluminium	:	M3, M4, M5, M6, M8
Brass/self tapping	:	M2,5 M3, M4, M5, M6
Steel/self tapping	:	M2,5 M3, M4, M5, M6
Tolerances	:	± 0.10mm

■ M2 Brass



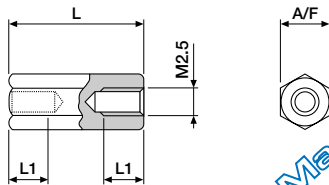
L1 = 6.00mm
Till L = 15.00mm threadlength is total length.

ORDERING INFORMATION

SPH-20FF-4000-XX A/F = 4.00mm, Brass
 available lengths: (L = mm)
 05, 06, 08, 10, 12, 15, 18, 20, 25, 30,
 35, 40, 45, 50

*Many new models have been added
contact sales office for datasheets*

■ M2.5 Brass



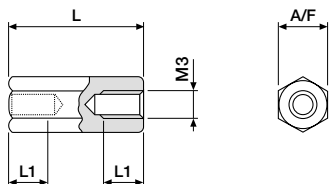
L1 = 10.00mm
Till L = 20.00mm threadlength is total length.

ORDERING INFORMATION

SPH-25FF-4000-XX A/F = 4.00mm, Brass*
SPH-25FF-5000-XX A/F = 5.00mm, Brass
 available lengths: (L = mm)
 05, 06, 08, 10, 12, 15, 18, 20, 25, 30,
 35, 40, 45, 50, 55, 60

*Max. available length is 50.00mm.

■ M3 Brass/Steel



L1 = 10.00mm
Till L = 20.00mm threadlength is total length.

ORDERING INFORMATION

SPH-30FF-5000-XX A/F = 5.00mm, Brass*
SPH-30FF-5500-XX A/F = 5.50mm, Brass
SPH-30FF-5510-XX A/F = 5.50mm, Steel
SPH-30FF-6010-XX A/F = 6.00mm, Steel
 available lengths: (L = mm)
 05, 06, 08, 10, 12, 15, 18, 20, 25, 30,
 35, 40, 45, 50, 55, 60, 65, 70

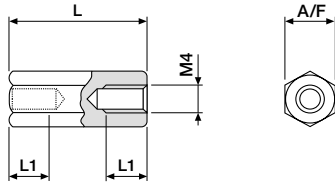
*Max. available length is 60.00mm.



Hexagonal Threaded Spacers, Female/Female

Brass and Steel

■ M4 Brass/Steel



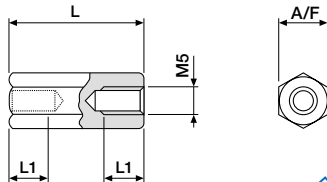
L1 = 10.00mm
Till L = 20.00mm threadlength is total length.

ORDERING INFORMATION

SPH-40FF-7000-XX A/F = 7.00mm, Brass
SPH-40FF-7010-XX A/F = 7.00mm, Steel
SPH-40FF-8010-XX A/F = 8.00mm, Steel

available lengths: (L = mm)
05, 06, 08, 10, 12, 15, 18, 20, 25, 30,
35, 40, 45, 50, 55, 60, 65, 70, 75, 80,
85, 90, 95

■ M5 Steel



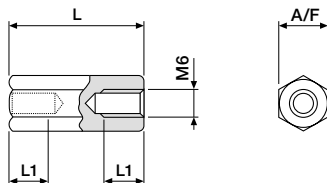
L1 = 10.00mm
Till L = 20.00mm threadlength is total length.

ORDERING INFORMATION

SPH-50FF-8000-XX A/F = 8.00mm, Brass
SPH-50FF-8010-XX A/F = 8.00mm, Steel

available lengths: (L = mm)
05, 08, 10, 12, 15, 18, 20, 25, 30, 35,
40, 45, 50, 55, 60, 65, 70, 75, 80, 85,
90, 95

■ M6 Steel



L1 = 10.00mm
Till L = 20.00mm threadlength is total length.

ORDERING INFORMATION

SPH-60FF-1000-XX A/F = 10.00mm, Brass
SPH-60FF-1010-XX A/F = 10.00mm, Steel

available lengths: (L = mm)
05, 08, 10, 12, 15, 18, 20, 25, 30, 35,
40, 45, 50, 55, 60, 65, 70, 75, 80, 85,
90, 95

Many new models have been added
contact sales office for datasheets