



# Hexagonal Threaded Spacers, Female/Female

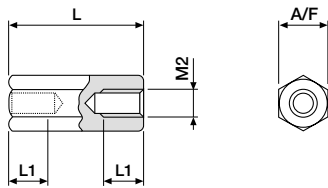
## Polyamide



A wide range of polyamide hexagonal spacers available with threads of M2, M2.5, M3, M4, M5 and M6.

Colour : Black

### ■ M2



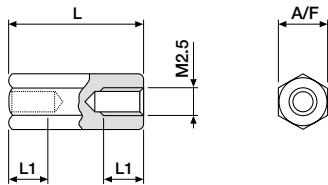
L1 = 10.00mm  
Till L = 16.00mm threadlength is total length.  
With L = 16, 17, 18, 19.00mm L1 = 1/2 L

#### ORDERING INFORMATION

SPH-20FF-5070-XX A/F = 5.00mm  
available lengths: (L)  
06 = 6.00mm (min.)  
45 = 45.00mm (max.)

Available in increments of 1.00mm.

### ■ M2.5



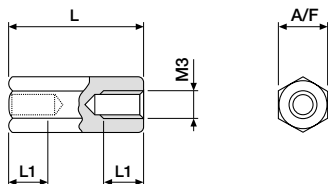
L1 = 10.00mm  
Till L = 16.00mm threadlength is total length.  
With L = 16, 17, 18, 19.00mm L1 = 1/2 L

#### ORDERING INFORMATION

SPH-25FF-5070-XX A/F = 5.00mm  
available lengths: (L)  
04 = 4.00mm (min.)  
55 = 55.00mm (max.)

Available in increments of 1.00mm.

### ■ M3



L1 = 10.00mm  
Till L = 16.00mm threadlength is total length.  
With L = 16, 17, 18, 19.00mm L1 = 1/2 L

#### ORDERING INFORMATION

SPH-30FF-6070-XX A/F = 6.00mm  
available lengths: (L)  
05 = 5.00mm (min.)  
65 = 65.00mm (max.)

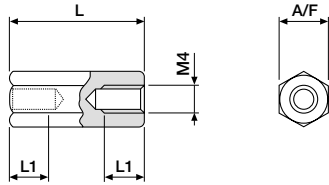
Available in increments of 1.00mm.



# Hexagonal Threaded Spacers, Female/Female

## Polyamide

### ■ M4



L1 = 10.00mm  
Til L = 20.00mm threadlength is total length.

#### ORDERING INFORMATION

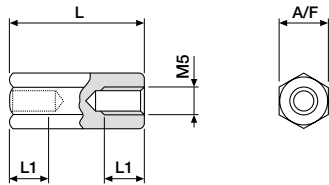
SPH-40FF-8070-XX

A/F = 8.00mm

available lengths: (L)  
05 = 5.00mm (min.)  
65 = 65.00mm (max.)

Available in increments of 1.00mm.

### ■ M5



L1 = 10.00mm  
Til L = 20.00mm threadlength is total length.

#### ORDERING INFORMATION

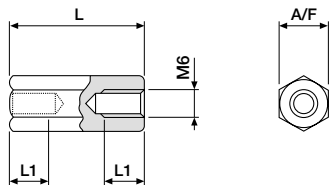
SPH-50FF-1070-XX

A/F = 10.00mm

available lengths: (L)  
10 = 10.00mm (min.)  
60 = 60.00mm (max.)

Available in increments of 1.00mm.

### ■ M6



L1 = 10.00mm  
Til L = 20.00mm threadlength is total length.

#### ORDERING INFORMATION

SPH-60FF-1070-XX

A/F = 10.00mm

available lengths: (L)  
10 = 10.00mm (min.)  
60 = 60.00mm (max.)

Available in increments of 1.00mm.